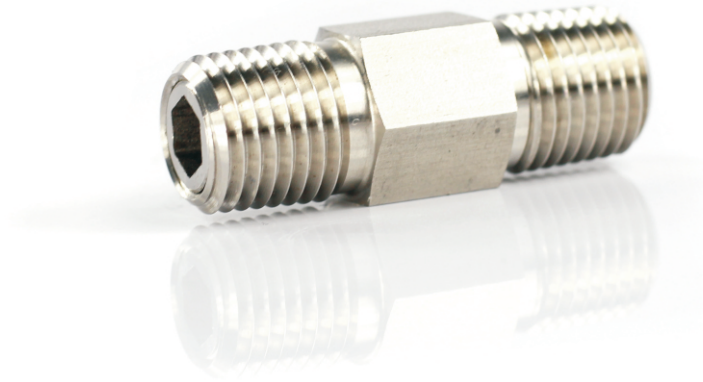


One-Piece Body Check Valves

CV4 Series



- ❖ Maximum working pressure up to 3000 psig (206 bar)
- ❖ Working temperature from -10°F to 400°F (-23°C to 204°C)
- ❖ One-piece body design
- ❖ Cracking pressure: 1/3 to 25 psig (0.02 to 1.7 bar)
- ❖ 316 stainless steel, brass and alloy 400 body material

Features

- ❖ Maximum working pressure up to 3000 psig (206 bar)
- ❖ Working temperature from -10°F to 400°F (-23°C to 204°C)
- ❖ One-piece body design
- ❖ Fully contained O-ring seal
- ❖ Cracking pressure: 1/3 to 25 psig (0.02 to 1.7 bar)
- ❖ 316 stainless steel, brass and alloy body material
- ❖ Variety of end connections

Cracking Pressure

Series	Nominal Cracking Pressure psig (bar)	Cracking Pressure Range psig (bar)
CV4	1/3 (0.03)	0 to 3 (0 to 0.21)
	1 (0.07)	0 to 4 (0 to 0.28)
	10 (0.69)	7 to 13 (0.49 to 0.90)
	25 (1.7)	21 to 29 (1.5 to 2.0)

Pressure-Temperature Ratings

Ratings based on fluorocarbon FKM O-rings in 316 stainless steel valves and Buna N O-rings in brass valves.

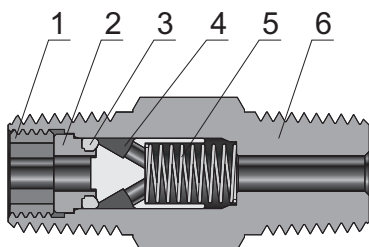
Material	316 S.S.	Brass
Temperature °F (°C)	Working Pressure, psig (bar)	
-10 (-23) to 100 (37)	3000 (206)	3000 (206)
200 (93)	2575 (177)	2600 (179)
250 (121)	2450 (168)	2405 (165)
300 (148)	2325 (160)	—
400 (204)	2185 (150)	—

Seal Materials

Seal Material	Temperature Range °F (°C)
Buna N	-10 to 250 (-23 to 121)
Ethylene propylene	-50 to 300 (-45 to 148)
Fluorocarbon FKM	-10 to 400 (-23 to 204)
Neoprene	-40 to 250 (-40 to 121)

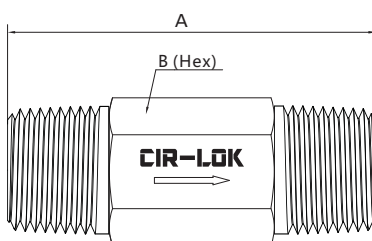
Standard Materials of Construction

CO Series



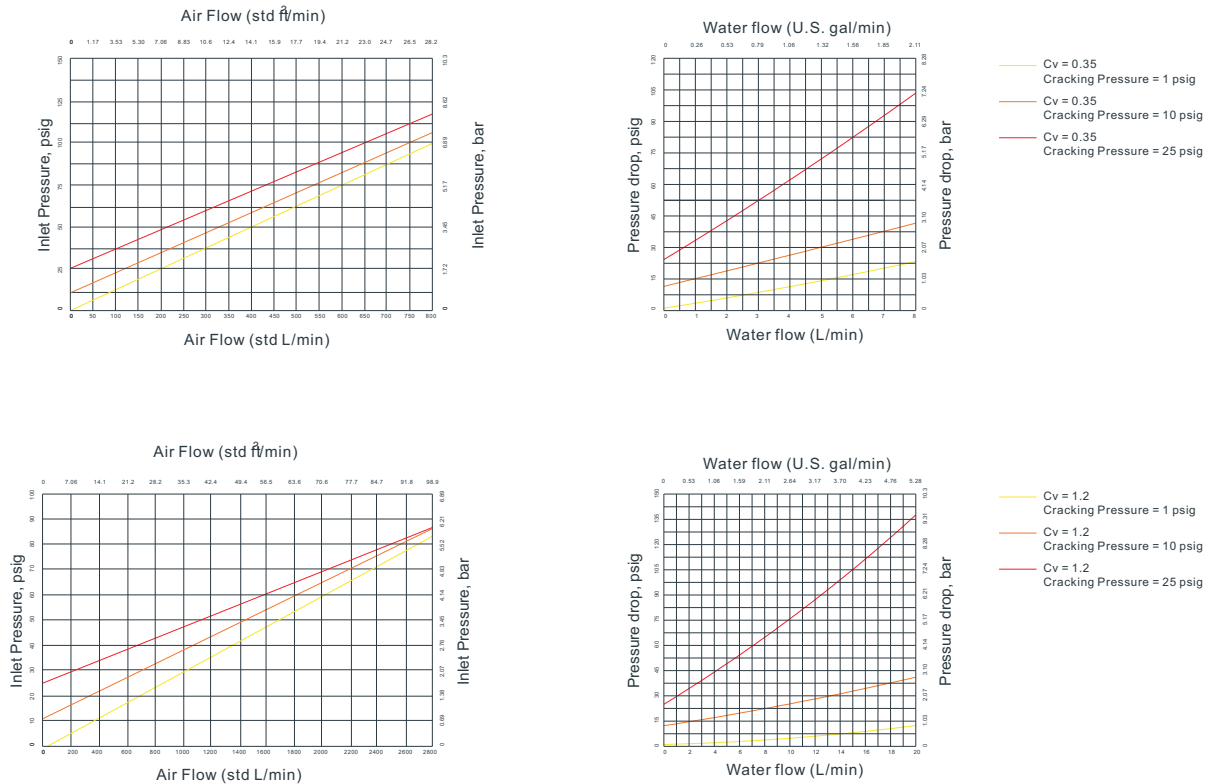
Component	Valve Material Grade/ASTM Specification	
	316 S.S.	Brass
1 Insert Locking Screw	316 S.S./A276 or A479	Brass C36000/B16
2 Insert	316 S.S./A479	Brass C36000/B16
3 O-ring	Fluorocarbon FKM	Buna N
4 Poppet	316 S.S./A479	Brass C36000/B16
5 Spring	302 S.S./A313	
6 Body	316 S.S./A479	Brass C36000/B16

Dimensions



Basic Ordering Number	Connection Type and Size	CV	Dimension, in. (mm)	
			A	B
CV4-FNPT4-	1/4 Female NPT	0.35	2.41 (61.2)	3/4 (19.05)
CV4-FNPT8-	1/2 Female NPT	1.20	3.71 (94.2)	1 1/16 (26.99)
CV4-NPT4-	1/4 Male NPT	0.35	1.62 (41.1)	9/16 (14.29)
CV4-NPT8-	1/2 Male NPT	1.20	2.28 (57.9)	7/8 (22.23)
CV4-FBT4-	1/4 Female BSPT	0.35	2.54 (64.5)	3/4 (19.05)
CV4-MBT4-	1/4 Male BSPT	0.35	1.62 (41.1)	9/16 (14.29)

Flow Data at 70 °F(20 °C)



How to Order

Series	Inlet Type	Inlet Size	Outlet Type	Outlet Size	Seal Material	Cracking Pressure	Body Material
CV4—	FNPT Female NPT	2 1/8 in.	Same as inlet type and inlet size		V Fluorocarbon FKM	1 1 psig	316 316 S.S.
	NPT Male NPT	4 1/4 in.			B Buna N	2 1/3 psig	316L 316L S.S.
	FBT Female BSPT	6 3/8 in. or 6 mm	If outlet and inlet are the same, eliminate the outlet designator	E Ethylene propylene	3 3 psig	304 304 S.S.	
	MBT Male BSPT	8 1/2 in. or 8 mm		N Neoprene	10 10 psig	304L 304L S.S.	
	FMS Female ISO 261			Z Kalrez	25 25 psig	A400 Alloy 400	
	MS Male ISO 261					A20 Alloy 20	
	FBP Female BSPP					A600 Alloy 600	
	MBP Male BSPP					A825 Alloy 825	
					A276 Alloy C276		
						DU7 Duplex 2507	
						BR Brass	