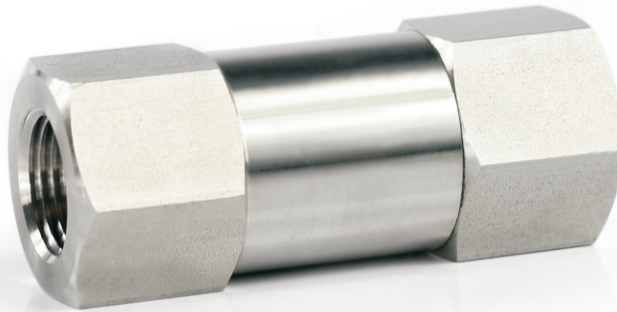


# Filters

## F2 Series



- ❖ Compact inline design
- ❖ Maximum working pressure up to 3000 psig (207 bar)
- ❖ Working temperature from -20°F to 900°F (-28°C to 482°C)
- ❖ 316 stainless steel and brass body material
- ❖ Variety of end connections

## Features

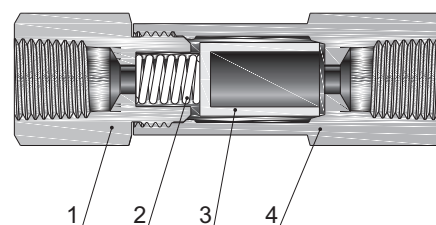
- ❖ Compact inline design
- ❖ Nominal pore sizes for sintered element: 0.5, 2, 7, 15, 40, 60 and 90 µm
- ❖ Nominal pore sizes for strainer element: 100, 150, 250 and 450 µm
- ❖ Maximum working pressure up to 3000 psig (207 bar)
- ❖ Working temperature from -20°F to 900°F (-28°C to 482°C)
- ❖ Body materials: 316 S.S. 316L S.S. 304 S.S. 304L S.S. 321 S.S. and Brass
- ❖ Variety of end connections

## Pressure vs. Temperature

Material	316 S.S.	Brass
Temperature, °F(°C)	Working Pressure, psig (bar)	
-20 (-28) to 100 (37)	3000 (207)	1000 (68.9)
200 (93)	2580 (177)	780 (53.7)
300 (148)	2330 (160)	680 (46.8)
400 (204)	2140 (147)	—
500 (260)	1990 (137)	—
600 (315)	1880 (129)	—
650 (343)	1845 (127)	—
700 (371)	1800 (124)	—
750 (398)	1760 (121)	—
800 (426)	1725 (118)	—
850 (454)	1690 (116)	—
900 (482)	1640 (112)	—

## Standard Materials of Construction

Component	Material Grade/ASTM Specification	
	316 S.S.	Brass
1 Inlet Body	316 S.S./A479	Brass C36000/B16
2 Spring	304 S.S./A313	
3 Element	Sintered 316 S.S. or strainer 316 S.S.	
4 Outlet Body	316 S.S./A479	Brass C36000/B16



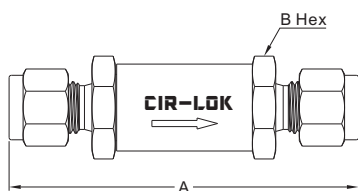
## Maximum Differential Pressure of Clean Filter at 70°F (20°C)

Maximum Differential Pressure psig (bar)										
0.5 micron	2 micron	7 micron	15 micron	40 micron	60 micron	90 micron	100 micron	150 micron	250 micron	450 micron
2250 (155.2)	2250 (155.2)	1950 (134.5)	1750 (120.3)	1150 (79.3)	1150 (79.3)	1000 (68.9)	1000 (68.9)	1000 (68.9)	1000 (68.9)	1000 (68.9)

## Elements

Nominal Pore Size $\mu\text{m}$	Pore Size Range $\mu\text{m}$	Element Type
0.5	0.5 to 2	Sintered
2	1 to 4	
7	5 to 10	
15	11 to 25	
40	35 to 53	
60	50 to 75	
90	75 to 100	Strainer
100	—	
150	—	
250	—	
450	—	

## Dimensions



Basic Ordering Number	Connection Type and Size	Orifice in.(mm)	Filter Series	Dimension, in. (mm)	
				A	B
F2-F2-	1/8" CIR-LOK	0.094 (2.39)	2	2.35 (59.7)	9/16 (14.3)
F2-F4-	1/4" CIR-LOK	0.187 (4.75)	4	2.95 (74.9)	3/4 (19.0)
F2-F6-	3/8" CIR-LOK	0.281 (7.14)	8	3.21 (81.5)	1 (25.4)
F2-F8-	1/2" CIR-LOK	0.406 (10.3)	8	3.49 (88.6)	
F2-M3-	3 mm CIR-LOK	0.094 (2.39)	2	2.38 (60.5)	9/16 (14.3)
F2-M6-	6 mm CIR-LOK	0.187 (4.75)	4	2.96 (75.2)	3/4 (19.0)
F2-FNPT2-	1/8 Female NPT	0.094 (2.39)	2	2.16 (54.9)	9/16 (14.3)
F2-FNPT4-	1/4 Female NPT	0.187 (4.75)	4	2.87 (72.9)	3/4 (19.0)
F2-NPT2-	1/8 Male NPT	0.094 (2.39)	2	1.88 (47.7)	9/16 (14.3)
F2-NPT4-	1/4 Male NPT	0.187 (4.75)	4	2.69 (68.3)	3/4 (19.0)
F2-GFS2-	1/8 Male GFS	0.094 (2.39)	2	2.79 (70.8)	
F2-GFS4-	1/4 Male GFS	0.187 (4.75)	4		
F2-FBT2-	1/8 Female BSPT	0.094 (2.39)	2	2.16 (54.9)	9/16 (14.3)
F2-FBT4-	1/4 Female BSPT	0.187 (4.75)	4	2.87 (72.9)	3/4 (19.0)
F2-MBT2-	1/8 Male BSPT	0.094 (2.39)	2	1.88 (47.7)	9/16 (14.3)
F2-MBT4-	1/4 Male BSPT	0.187 (4.75)	4	2.69 (68.3)	3/4 (19.0)

## How to Order

**F2 — F6 — M10 — S90 — B4 — 316**

Filter Series	Inlet Type	Inlet Size	Outlet Type	Outlet Size	Element Type	Element Nominal Pore Size	Bypass Port for F1	Body Material
F2	<b>FNPT</b> Female NPT	2 1/8 in.	Same as inlet type and inlet size		<b>S</b> Sintered	Sintered	None	<b>316</b> 316 S.S.
	<b>NPT</b> Male NPT	4 1/4 in.			<b>T</b> Strainer	<b>05</b> 0.5µm	<b>B2</b> FNPT2	<b>316L</b> 316L S.S.
	<b>FBT</b> Female BSPT	6 3/8 in. or 6 mm			2 2µm	<b>B4</b> FNPT4	<b>304</b> 304 S.S.	
	<b>MBT</b> Male BSPT	8 1/2 in. or 8 mm	If outlet and inlet are the same, eliminate the outlet designator		7 7µm	<b>B8</b> FNPT8	<b>304L</b> 304L S.S.	
	<b>FMS</b> Female ISO 261	10 10 mm			15 15µm	<b>F2</b> F2	<b>BR</b> Brass	
	<b>MS</b> Male ISO 261	12 3/4 in. or 12 mm			40 40µm	<b>F4</b> F4		
	<b>FBP</b> Female BSPP	14 14 mm or M14 x 1.5			60 60µm	<b>F6</b> F6		
	<b>MBP</b> Male BSPP	16 1 in. or 16 mm			90 90µm	<b>F8</b> F8		
	<b>F</b> Fractional Tube Fitting	18 18 mm			Strainer			
	<b>M</b> Metric Tube Fitting	20 1 1/4 in. or 20 mm			100 100µm			
	<b>FSW</b> Fractional Tube Socket Weld	22 22 mm or M22 x1.5			150 150µm			
	<b>FBW</b> Fractional Tube Butt Weld	25 25 mm			250 250µm			
	<b>GFS</b> Male GFS Fitting		450 450µm					