

Pressure Reducing Regulators

PR3 Series

- ❖ Maximum rated inlet pressure 6000 psig
- ❖ Flow Coefficient $C_v=0.06$
- ❖ Single stage
- ❖ Metal-to-metal diaphragm seal
- ❖ 316, 316L or Brass, Alloy 276 and Alloy 400 body material

Pressure Reducing Regulators-PR3

The CIR-LOK PR3 Series is a compact, lightweight high purity single-stage regulator for specialty, flammable and industrial gas.

Applications

- ❖ Laboratory and point-of-use gas systems
- ❖ Sampling systems, zero, span and calibration analyzer gases
- ❖ Specialty and industrial gas cylinder regulator
- ❖ Chromatograph flame detector fuel supply

Features

- ❖ Compact
- ❖ Designed to minimize contamination and provide accurate regulation of any corrosive, noncorrosive, or toxic gas
- ❖ Brass model provides added economy for control of non-corrosive media
- ❖ Metal-to-metal diaphragm to body seal ensures minimum inboard and outboard leakage
- ❖ Convoluted diaphragm delivers excellent accuracy and long service life
- ❖ Panel mounting is available

Operating Parameters

- ❖ Maximum Inlet Pressure
6000 psig (413 bar)
- ❖ Outlet Pressure Ranges
0-250 psig (0-17.2 bar), 0-500 psig (0-34.4 bar), 0-1500 psig (0-103.4 bar), 0-2500 psig (0-172 bar)
- ❖ Design Proof Pressure
150% maximum rated
- ❖ Leakage
Internal: bubble-tight
- ❖ Operating Temperature
PCTFE: -40°F to 140°F (-40°C to 60°C)
PEEK: -40°F to 392°F (-40°C to 200°C)
PI: -40°F to 250°F (-40°C to 121°C)
- ❖ Flow Capacity
Cv = 0.06

Cleaning

- ❖ CGA4.1 and ASTM G93 Grade C

Internal Volume

- ❖ 6 cc

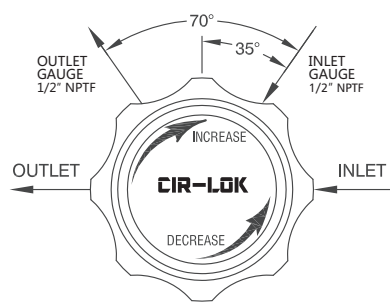
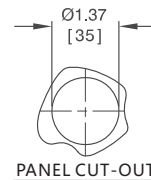
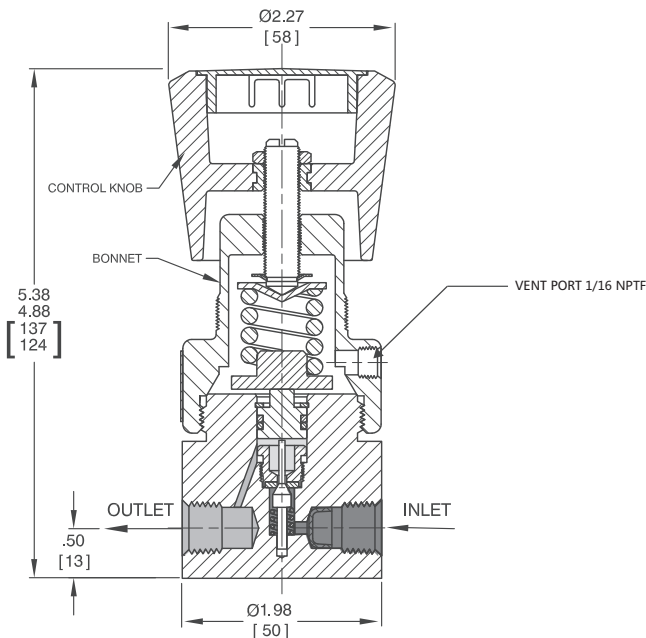
Weight (without gauges)

- ❖ 2 lbs / 0.9 kg

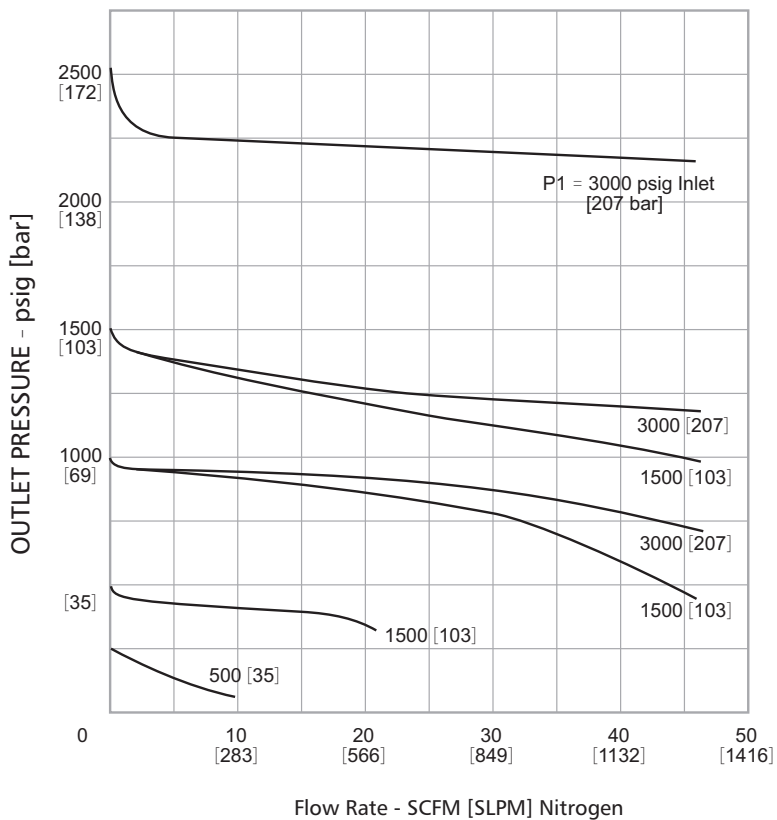
Wetted Material

- ❖ Body
316L S. S., Brass, Alloy276 or Alloy400
- ❖ Bonnet
300 series S. S., Brass
- ❖ Diaphragm
316 S. S., Elgiloy®
- ❖ Seat
PEEK, PCTFE, PI
- ❖ Remaining Parts
316 S. S., Brass, Alloy276 or Alloy400

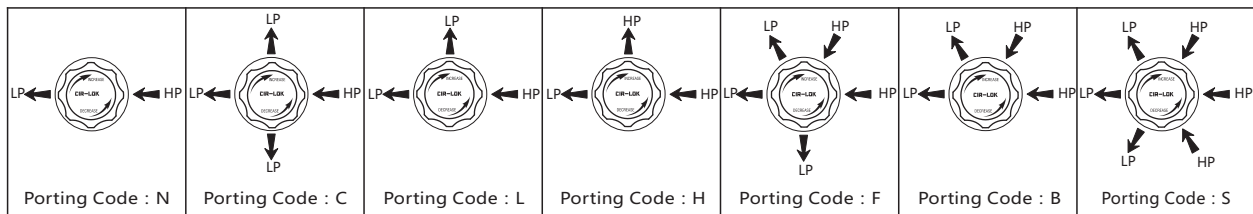
Dimensions In. [millimeter]



Flow Charts



Port Configurations Note: HP=High pressure Port ; LP=Low pressure Port



How to Order

PR3 — **FNPT4** — **IB** — **62500G** — **316L**

Series	Inlet Type Outlet Type	Inlet Size Outlet Size	Seat Material	Porting	Intel Pressure	Out Pressure	Gauges	Body Material
PR3	FNPT Female NPT	2 1/8 in.	PCTFE	N No Gauge Ports	6 6000 psig	2500 0-2500 psig	G No gauges with gauges	316 316 S.S.
	FBT Female BSPT	4 1/4 in.	P PEEK	L One Gauge Ports		1500 0-1500 psig		316L 316L S.S
	F Fractional Tube Fitting	6 6 mm	I PI	C One Gauge Ports		500 0-500 psig		A400 Alloy 400
	M Metric Tube Fitting	8 8 mm		H One Gauge Ports		250 0-250 psig		A276 Alloy C276
				B Two Gauge Ports			BR Brass	
				F Two Gauge Ports				
				S Two Gauge Ports				