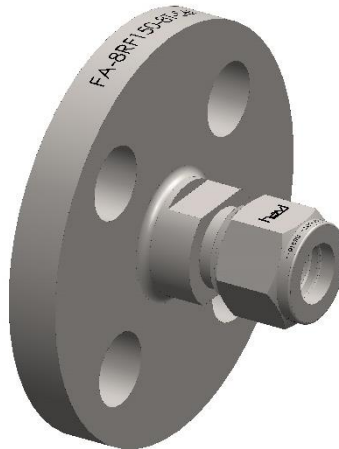


FLANGE ADAPTOR

DESCRIPTION

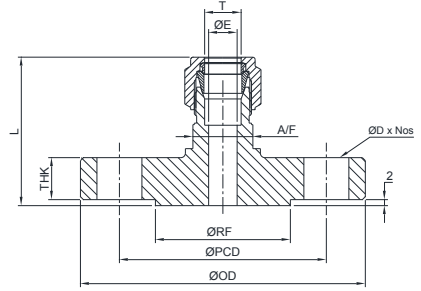
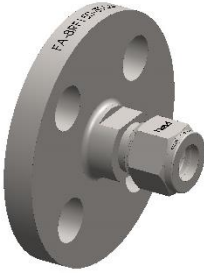
HAVI® Flange Adaptors provides a safe, reliable, leak-proof seal at all tubing connections and eliminates costly, dangerous leaks in process & instrumentation tubing systems. To assure reliable performance our Single & Double ferrule tube fittings consists of three to four precise machined components i.e. Body, Nut, Single ferrule or Front & Back ferrule. All these components are manufactured to very stringent tolerances under rigid quality control systems.

HAVI® Flange Adaptors are supplied in finger tight assembled and ready to use condition without any special tools.



CAUTION: Do not make up any instrumentation tube fitting by torque or 'feel' since variables in all fitting connections such as tubing and fitting tolerances, wall thickness of the tubing and lubricity of nut lubricants can result in improperly assembled tubing connections.

ASME B16.5 Class 150 Flange X Fractional Tube Fitting

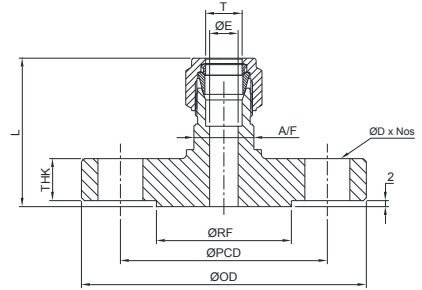
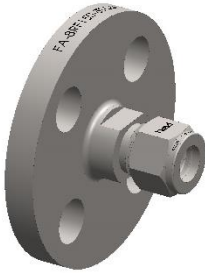


PART NUMBER	NPS (IN)	ØOD	ØRF	T	ØPCD	ØD x Nos	T (INCH)	ØE	L	A/F
FA-8RF150-4T-S6L	1/2"	90	34.9	11.2	60.3	16 (4 Nos)	1/4"	4.8	53	25.4
FA-8RF150-6T-S6L							3/8"	7.1	53	
FA-8RF150-8T-S6L							1/2"	10.3	57	
FA-12RF150-4T-S6L	3/4"	100	42.9	11.2	69.9	16 (4 Nos)	1/4"	4.8	58	28.5
FA-12RF150-6T-S6L							3/8"	7.1	58	
FA-12RF150-8T-S6L							1/2"	10.3	61	
FA-16RF150-4T-S6L	1"	110	50.8	12.7	79.4	16 (4 Nos)	1/4"	4.8	61	28.5
FA-16RF150-6T-S6L							3/8"	7.1	61	
FA-16RF150-8T-S6L							1/2"	10.3	65	
FA-16RF150-12T-S6L	2"	150	92.1	17.5	120.7	19 (4 Nos)	3/4"	15	65	50.8
FA-32RF150-4T-S6L							1/4"	4.8	69	
FA-32RF150-6T-S6L							3/8"	7.1	69	
FA-32RF150-8T-S6L	2"	150	92.1	17.5	120.7	19 (4 Nos)	1/2"	10.3	73	50.8
FA-32RF150-12T-S6L							3/4"	15	72	
FA-32RF150-16T-S6L							1"	22	74	

ASME B16.5 Class 150 Flange X Fractional Tube Fitting

PART NUMBER	NPS (IN)	OD	RF	T	ØPCD	ØD x Nos	T (METRIC)	ØE	L	A/F
FA-8RF150-6M-S6L	1/2"	90	34.9	11.2	60.3	16 (4 Nos)	6mm	4.2	53	25.4
FA-8RF150-10M-S6L							10mm	8	53	
FA-8RF150-12M-S6L							12mm	9.5	57	
FA-12RF150-6M-S6L	3/4"	100	42.9	11.2	69.9	16 (4 Nos)	6mm	4.2	58	28.5
FA-12RF150-10M-S6L							10mm	8	58	
FA-12RF150-12M-S6L							12mm	9.5	61	
FA-16RF150-6M-S6L	1"	110	50.8	12.7	79.4	16 (4 Nos)	6mm	4.2	61	28.5
FA-16RF150-10M-S6L							10mm	8	61	
FA-16RF150-12M-S6L							12mm	9.5	65	
FA-16RF150-20M-S6L	2"	150	92.1	17.5	120.7	19 (4 Nos)	20mm	18	65	50.8
FA-32RF150-6M-S6L							6mm	4.2	69	
FA-32RF150-10M-S6L							10mm	8	69	
FA-32RF150-12M-S6L	2"	150	92.1	17.5	120.7	19 (4 Nos)	12mm	9.5	73	50.8
FA-32RF150-20M-S6L							20mm	18	73	
FA-32RF150-25M-S6L							25mm	22	74	

ASME B16.5 Class 300 Flange X Fractional Tube Fitting

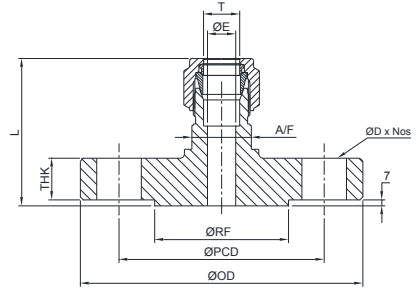
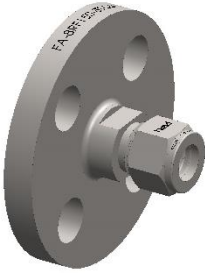


PART NUMBER	NPS (IN)	ØOD	ØRF	T	ØPCD	ØD x Nos	T (INCH)	ØE	L	A/F
FA-8RF300-4T-S6L	1/2"	95	34.9	12.7	66.7	16 (4 Nos)	1/4"	4.8	58	25.4
FA-8RF300-6T-S6L							3/8"	7.1	58	
FA-8RF300-8T-S6L							1/2"	10.3	62	
FA-12RF300-4T-S6L	3/4"	115	42.9	14.3	82.6	19 (4 Nos)	1/4"	4.8	63	28.5
FA-12RF300-6T-S6L							3/8"	7.1	63	
FA-12RF300-8T-S6L							1/2"	10.3	66	
FA-16RF300-4T-S6L	1"	125	50.8	15.9	88.9	19 (4 Nos)	1/4"	4.8	68	28.5
FA-16RF300-6T-S6L							3/8"	7.1	68	
FA-16RF300-8T-S6L							1/2"	10.3	71	
FA-16RF300-12T-S6L	2"	165	92.1	20.7	127	19 (8 Nos)	3/4"	15	71	50.8
FA-32RF300-4T-S6L							1/4"	4.8	75	
FA-32RF300-6T-S6L							3/8"	7.1	75	
FA-32RF300-8T-S6L	2"	165	92.1	20.7	127	19 (8 Nos)	1/2"	10.3	79	50.8
FA-32RF300-12T-S6L							3/4"	15	78	
FA-32RF300-16T-S6L							1"	22	80	

ASME B16.5 Class 300 Flange X Fractional Tube Fitting

PART NUMBER	NPS (IN)	ØOD	ØRF	T	ØPCD	ØD x Nos	T (METRIC)	ØE	L	A/F
FA-8RF300-6M-S6L	1/2"	95	34.9	14.3	66.7	16 (4 Nos)	6mm	4.2	58	25.4
FA-8RF300-10M-S6L							10mm	8	59	
FA-8RF300-12M-S6L							12mm	9.5	62	
FA-12RF300-6M-S6L	3/4"	115	42.9	15.9	82.6	19 (4 Nos)	6mm	4.2	63	28.5
FA-12RF300-10M-S6L							10mm	8	64	
FA-12RF300-12M-S6L							12mm	9.5	68	
FA-16RF300-6M-S6L	1"	125	50.8	17.5	88.9	19 (4 Nos)	6mm	4.2	68	28.5
FA-16RF300-10M-S6L							10mm	8	68	
FA-16RF300-12M-S6L							12mm	9.5	72	
FA-16RF300-20M-S6L	2"	165	92.1	25.4	127	19 (8 Nos)	20mm	18	72	50.8
FA-32RF300-6M-S6L							6mm	4.2	76	
FA-32RF300-10M-S6L							10mm	8	76	
FA-32RF300-12M-S6L	2"	165	92.1	25.4	127	19 (8 Nos)	12mm	9.5	80	50.8
FA-32RF300-20M-S6L							20mm	18	80	
FA-32RF300-25M-S6L							25mm	22	80	

ASME B16.5 Class 600 Flange X Fractional Tube Fitting

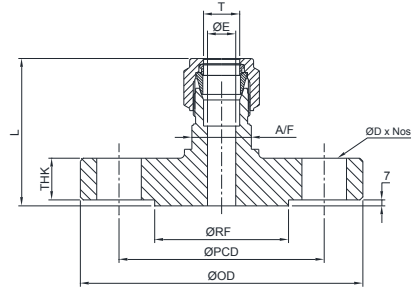
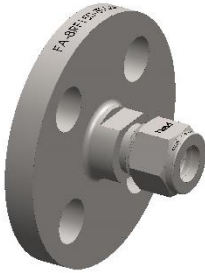


PART NUMBER	NPS (IN)	ØOD	ØRF	T	ØPCD	ØD x Nos	T (INCH)	ØE	L	A/F
FA-8RF600-4T-S6L	1/2"	95	34.9	14.3	66.7	16 (4 Nos)	1/4"	4.8	64	25.4
FA-8RF600-6T-S6L							3/8"	7.1	64	
FA-8RF600-8T-S6L							1/2"	10.3	68	
FA-12RF600-4T-S6L	3/4"	115	42.9	15.9	82.6	19 (4 Nos)	1/4"	4.8	69	28.5
FA-12RF600-6T-S6L							3/8"	7.1	69	
FA-12RF600-8T-S6L							1/2"	10.3	73	
FA-16RF600-4T-S6L	1"	125	50.8	17.5	88.9	19 (4 Nos)	1/4"	4.8	74	28.5
FA-16RF600-6T-S6L							3/8"	7.1	74	
FA-16RF600-8T-S6L							1/2"	10.3	77	
FA-16RF600-12T-S6L							3/4"	15	77	
FA-32RF600-4T-S6L	2"	165	92.1	25.4	127	19 (8 Nos)	1/4"	4.8	85	50.8
FA-32RF600-6T-S6L							3/8"	7.1	85	
FA-32RF600-8T-S6L							1/2"	10.3	88	
FA-32RF600-12T-S6L							3/4"	15	88	
FA-32RF600-16T-S6L							1"	22	90	

ASME B16.5 Class 600 Flange X Fractional Tube Fitting

PART NUMBER	NPS (IN)	ØOD	ØRF	T	ØPCD	ØD x Nos	T (METRIC)	ØE	L	A/F
FA-8RF600-6M-S6L	1/2"	95	34.9	14.3	66.7	16 (4 Nos)	6mm	4.2	64	25.4
FA-8RF600-10M-S6L							10mm	8	65	
FA-8RF600-12M-S6L							12mm	9.5	68	
FA-12RF600-6M-S6L	3/4"	115	42.9	15.9	82.6	19 (4 Nos)	6mm	4.2	69	28.5
FA-12RF600-10M-S6L							10mm	8	70	
FA-12RF600-12M-S6L							12mm	9.5	73	
FA-16RF600-6M-S6L	1"	125	50.8	17.5	88.9	19 (4 Nos)	6mm	4.2	74	28.5
FA-16RF600-10M-S6L							10mm	8	75	
FA-16RF600-12M-S6L							12mm	9.5	78	
FA-16RF600-20M-S6L							20mm	18	78	
FA-32RF600-6M-S6L	2"	165	92.1	25.4	127	19 (8 Nos)	6mm	4.2	85	50.8
FA-32RF600-10M-S6L							10mm	8	86	
FA-32RF600-12M-S6L							12mm	9.5	89	
FA-32RF600-20M-S6L							20mm	18	89	
FA-32RF600-25M-S6L							25mm	22	90	

ASME B16.5 Class 900 Flange X Fractional Tube Fitting

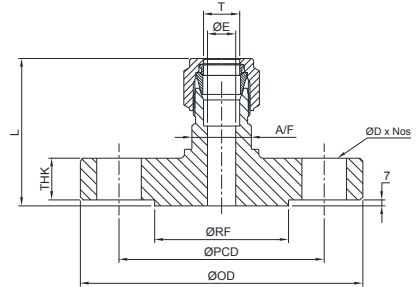
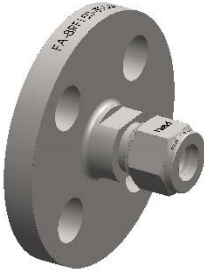


PART NUMBER	NPS (IN)	ØOD	ØRF	T	ØPCD	ØD x Nos	T (INCH)	ØE	L	A/F
FA-8RF900-4T-S6L	1/2"	120	34.9	22.3	82.6	22.2 (4 Nos)	1/4"	4.8	72	25.4
FA-8RF900-6T-S6L							3/8"	7.1	72	
FA-8RF900-8T-S6L							1/2"	10.3	76	
FA-12RF900-4T-S6L	3/4"	130	42.9	25.4	88.9	22.2 (4 Nos)	1/4"	4.8	82	28.5
FA-12RF900-6T-S6L							3/8"	7.1	82	
FA-12RF900-8T-S6L							1/2"	10.3	85	
FA-16RF900-4T-S6L	1"	150	50.8	28.6	101.6	25.4 (4 Nos)	1/4"	4.8	85	28.5
FA-16RF900-6T-S6L							3/8"	7.1	85	
FA-16RF900-8T-S6L							1/2"	10.3	88	
FA-16RF900-12T-S6L							3/4"	15	88	
FA-32RF900-4T-S6L	2"	215	92.1	38.1	165.1	25.4 (8 Nos)	1/4"	4.8	113	50.8
FA-32RF900-6T-S6L							3/8"	7.1	113	
FA-32RF900-8T-S6L							1/2"	10.3	116	
FA-32RF900-12T-S6L							3/4"	15	116	
FA-32RF900-16T-S6L							1"	22	118	

ASME B16.5 Class 900 Flange X Fractional Tube Fitting

PART NUMBER	NPS (IN)	ØOD	ØRF	T	ØPCD	ØD x Nos	T (METRIC)	ØE	L	A/F
FA-8RF900-6M-S6L	1/2"	120	34.9	22.3	82.6	22.2 (4 Nos)	6mm	4.2	72	25.4
FA-8RF900-10M-S6L							10mm	8	74	
FA-8RF900-12M-S6L							12mm	9.5	76	
FA-12RF900-6M-S6L	3/4"	130	42.9	25.4	88.9	22.2 (4 Nos)	6mm	4.2	82	28.5
FA-12RF900-10M-S6L							10mm	8	83	
FA-12RF900-12M-S6L							12mm	9.5	86	
FA-16RF900-6M-S6L	1"	150	50.8	28.6	101.6	25.4 (4 Nos)	6mm	4.2	85	28.5
FA-16RF900-10M-S6L							10mm	8	86	
FA-16RF900-12M-S6L							12mm	9.5	89	
FA-16RF900-20M-S6L							20mm	18	89	
FA-32RF900-6M-S6L	2"	215	92.1	38.1	165.1	25.4 (8 Nos)	6mm	4.2	114	50.8
FA-32RF900-10M-S6L							10mm	8	114	
FA-32RF900-12M-S6L							12mm	9.5	118	
FA-32RF900-20M-S6L							20mm	18	118	
FA-32RF900-25M-S6L							25mm	22	118	

ASME B16.5 Class 1500 Flange X Fractional Tube Fitting

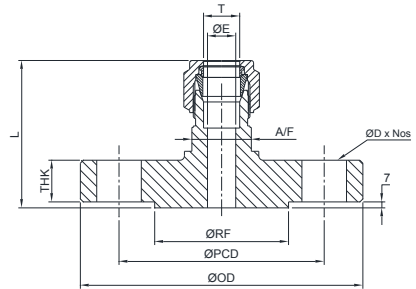
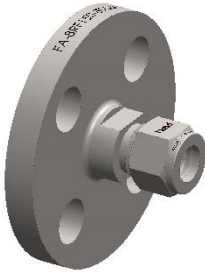


PART NUMBER	NPS (IN)	ØOD	ØRF	T	ØPCD	ØD x Nos	T (INCH)	ØE	L	A/F
FA-8RF1500-4T-S6L							1/4"	4.8	72	
FA-8RF1500-6T-S6L	1/2"	120	34.9	22.3	82.6	22.2 (4 Nos)	3/8"	7.1	72	25.4
FA-8RF1500-8T-S6L							1/2"	10.3	76	
FA-12RF1500-4T-S6L							1/4"	4.8	82	
FA-12RF1500-6T-S6L	3/4"	130	42.9	25.4	88.9	22.2 (4 Nos)	3/8"	7.1	82	
FA-12RF1500-8T-S6L							1/2"	10.3	85	
FA-16RF1500-4T-S6L							1/4"	4.8	85	28.5
FA-16RF1500-6T-S6L	1"	150	50.8	28.6	101.6	25.4 (4 Nos)	3/8"	7.1	85	
FA-16RF1500-8T-S6L							1/2"	10.3	88	
FA-16RF1500-12T-S6L							3/4"	15	88	
FA-32RF1500-4T-S6L							1/4"	4.8	113	
FA-32RF1500-6T-S6L	2"	215	92.1	38.1	165.1	25.4 (8 Nos)	3/8"	7.1	113	50.8
FA-32RF1500-8T-S6L							1/2"	10.3	116	
FA-32RF1500-12T-S6L							3/4"	15	116	
FA-32RF1500-16T-S6L							1"	22	118	

ASME B16.5 Class 1500 Flange X Fractional Tube Fitting

PART NUMBER	NPS (IN)	ØOD	ØRF	T	ØPCD	ØD x Nos	T (METRIC)	ØE	L	A/F
FA-8RF1500-6M-S6L							6mm	4.2	72	
FA-8RF1500-10M-S6L	1/2"	120	34.9	22.3	82.6	22.2 (4 Nos)	10mm	8	74	25.4
FA-8RF1500-12M-S6L							12mm	9.5	76	
FA-12RF1500-6M-S6L							6mm	4.2	82	
FA-12RF1500-10M-S6L	3/4"	130	42.9	25.4	88.9	22.2 (4 Nos)	10mm	8	83	
FA-12RF1500-12M-S6L							12mm	9.5	86	
FA-16RF1500-6M-S6L							6mm	4.2	85	28.5
FA-16RF1500-10M-S6L	1"	150	50.8	28.6	101.6	25.4 (4 Nos)	10mm	8	86	
FA-16RF1500-12M-S6L							12mm	9.5	89	
FA-16RF1500-20M-S6L							20mm	18	89	
FA-32RF1500-6M-S6L							6mm	4.2	114	
FA-32RF1500-10M-S6L	2"	215	92.1	38.1	165.1	25.4 (8 Nos)	10mm	8	114	50.8
FA-32RF1500-12M-S6L							12mm	9.5	118	
FA-32RF1500-20M-S6L							20mm	18	118	
FA-32RF1500-25M-S6L							25mm	22	118	

ASME B16.5 Class 2500 Flange X Fractional Tube Fitting

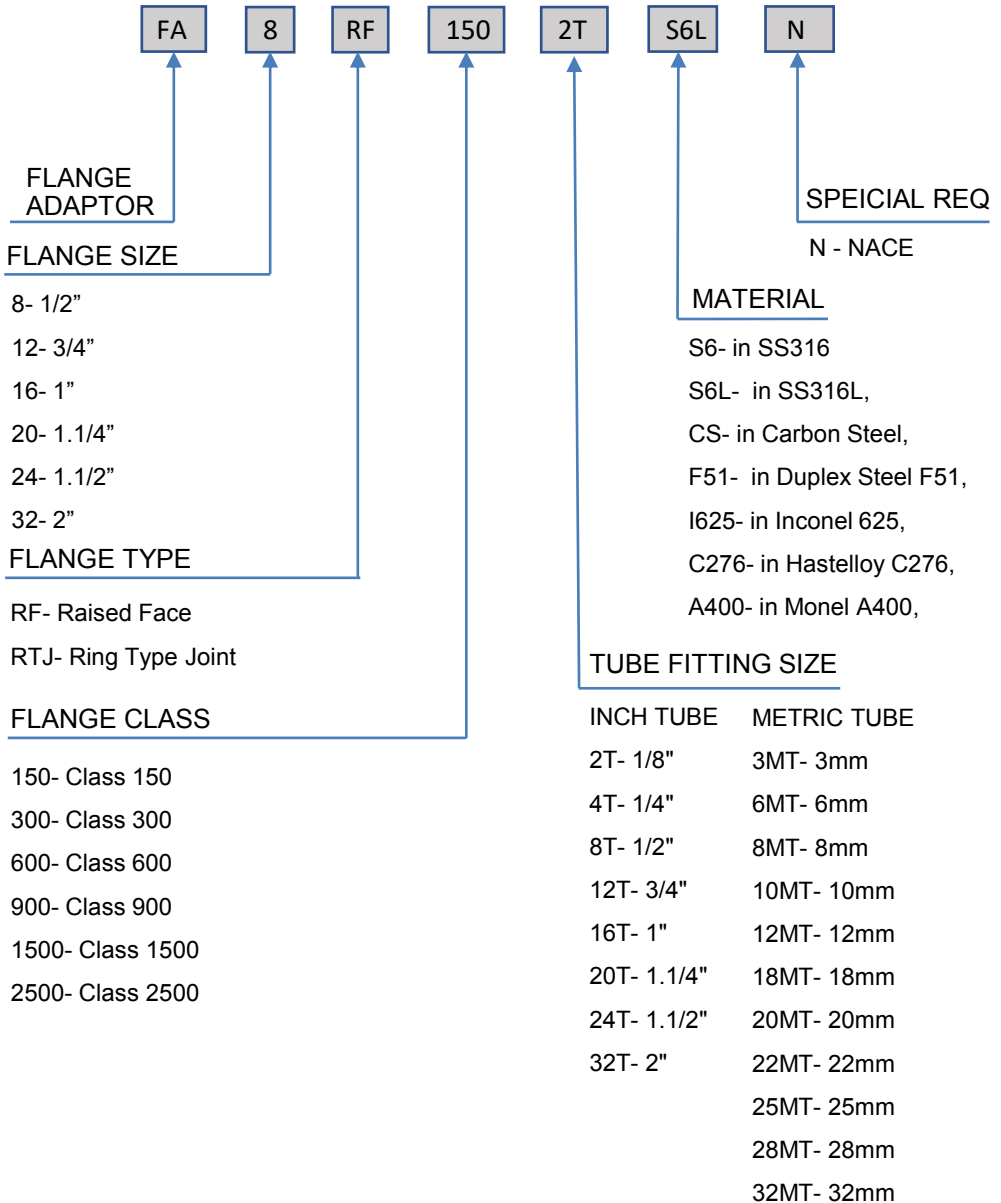


PART NUMBER	NPS (IN)	ØOD	ØRF	T	ØPCD	ØD x Nos	T (INCH)	ØE	L	A/F
FA-8RF2500-4T-S6L	1/2"	135	34.9	30.2	88.9	22.2 (4 Nos)	1/4"	4.8	80	25.4
FA-8RF2500-6T-S6L							3/8"	7.1	80	
FA-8RF2500-8T-S6L							1/2"	10.3	84	
FA-12RF2500-4T-S6L	3/4"	140	42.9	31.8	92.5	22.2 (4 Nos)	1/4"	4.8	88	28.5
FA-12RF2500-6T-S6L							3/8"	7.1	88	
FA-12RF2500-8T-S6L							1/2"	10.3	92	
FA-16RF2500-4T-S6L	1"	160	50.8	35	108.6	25.4 (4 Nos)	1/4"	4.8	92	28.5
FA-16RF2500-6T-S6L							3/8"	7.1	92	
FA-16RF2500-8T-S6L							1/2"	10.3	95	
FA-16RF2500-12T-S6L	2"	235	92.1	50.9	171.4	28.6 (8 Nos)	3/4"	15	95	50.8
FA-32RF2500-4T-S6L							1/4"	4.8	126	
FA-32RF2500-6T-S6L							3/8"	7.1	126	
FA-32RF2500-8T-S6L	2"	235	92.1	50.9	171.4	28.6 (8 Nos)	1/2"	10.3	130	50.8
FA-32RF2500-12T-S6L							3/4"	15	129	
FA-32RF2500-16T-S6L	2"	235	92.1	50.9	171.4	28.6 (8 Nos)	1"	22	131	50.8

ASME B16.5 Class 2500 Flange X Fractional Tube Fitting

PART NUMBER	NPS (IN)	ØOD	ØRF	T	ØPCD	ØD x Nos	T (METRIC)	ØE	L	A/F
FA-8RF2500-6M-S6L	1/2"	135	34.9	30.2	88.9	22.2 (4 Nos)	6mm	4.2	80	25.4
FA-8RF2500-10M-S6L							10mm	8	82	
FA-8RF2500-12M-S6L							12mm	9.5	84	
FA-12RF2500-6M-S6L	3/4"	140	42.9	31.8	92.5	22.2 (4 Nos)	6mm	4.2	88	28.5
FA-12RF2500-10M-S6L							10mm	8	90	
FA-12RF2500-12M-S6L							12mm	9.5	92	
FA-16RF2500-6M-S6L	1"	160	50.8	35	108.6	25.4 (4 Nos)	6mm	4.2	92	28.5
FA-16RF2500-10M-S6L							10mm	8	92	
FA-16RF2500-12M-S6L							12mm	9.5	95	
FA-16RF2500-20M-S6L	2"	235	92.1	50.9	171.4	28.6 (8 Nos)	20mm	18	95	50.8
FA-32RF2500-6M-S6L							6mm	4.2	126	
FA-32RF2500-10M-S6L							10mm	8	128	
FA-32RF2500-12M-S6L	2"	235	92.1	50.9	171.4	28.6 (8 Nos)	12mm	9.5	130	50.8
FA-32RF2500-20M-S6L							20mm	18	130	
FA-32RF2500-25M-S6L	2"	235	92.1	50.9	171.4	28.6 (8 Nos)	25mm	22	132	50.8

Ordering Information



LOCAL DISTRIBUTOR



Your **SMART** Partner
for **SMART** Products

havi[®]
Fittings & Valves

A-Wing, 201
Prime Trade Center,
Sativali Road, Vasai East,
Dist. Palghar 401208,
Maharashtra, India.
Tel.: +91 7410 079684
Email: sales@havi.in

Компания ВСП
107023, Россия, Москва,
Семеновская площадь, 1а, 18 этаж
+7 499 4040080
vsp@vsp-co.org
www.vsp-co.org