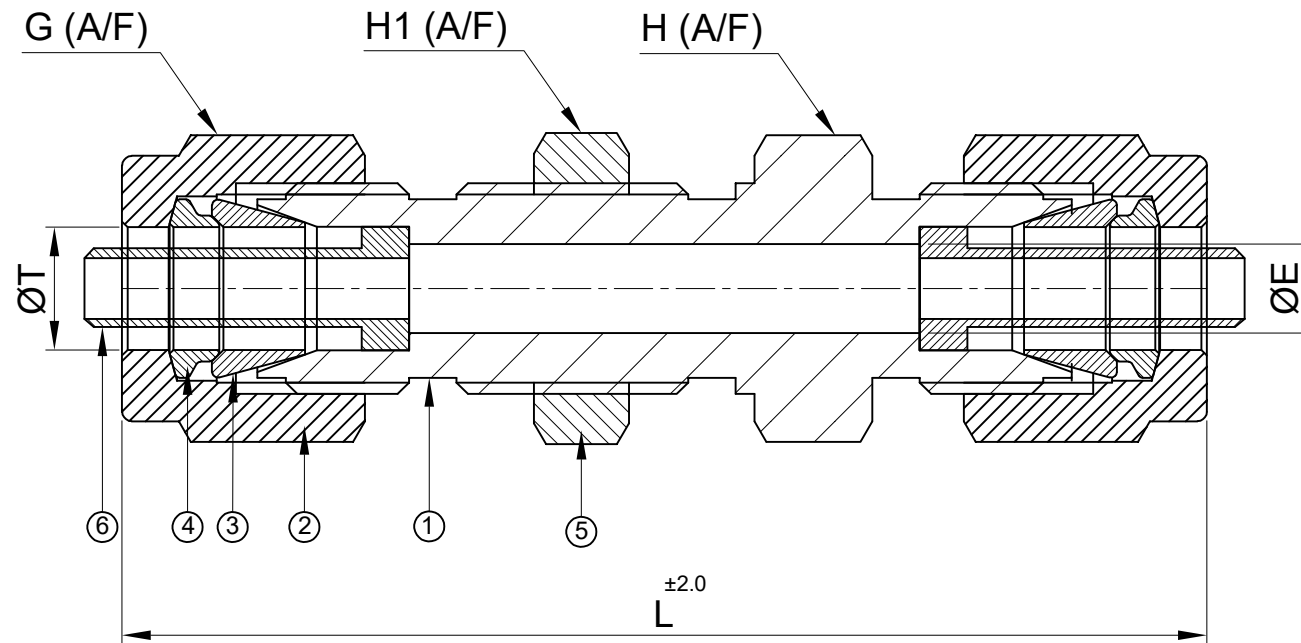


SR NO	DESCRIPTION	QTY	MATERIAL
1	BODY	1	SS 316
2	NUT	2	SS 316
3	FRONT FERRULE	2	SS 316
4	BACK FERRULE	2	SS 316
5	BULKHEAD CHECK NUT	1	SS 316
6	INSERT	2	SS 316



SR NO	PART NO	T	L	H1 (A/F)	H (A/F)	G(A/F)	ØE
1	8MWIBHU-S6	8mm	62.0	16.0	16.0	16.0	6.4

PART NAME :		CUSTOMER NAME:-	
Bulkhead Union- TUBE OD x TUBE OD WITH INSERT			
DWG NO : GA-BHUWI-S6		PROJECT NAME:-	
MATERIAL : SS 316		PO NO.:-	
DRAWN BY : VK		ENQ NO: EN2223/00614	
CHECKED BY : SB		SO NO.:-	
APPROVED BY : SM		SHEET NO: 01 OF 01	
REV NO	DESCRIPTION	SIGN	DATE
* All dimensions are in mm. Dimensions for reference only and are subject to change without notice		REV NO: 00	
* This document is the property of Havi Engineering India Pvt. Ltd. No exploitation or release of any text contained herein or relating to this document is permitted in any form without the written consent of HAVI.		SCALE: NTS	

NOTE:
 • # MARKED DIMENSION IS IN FINGER TIGHT POSITION.
 • NPT THREAD AS PER ANSI B 1.20.1.

	SIGN	DATE
DRAWN BY	VK	05.09.2022
CHECKED BY	SB	05.09.2022
APPROVED BY	SM	05.09.2022

havi
 Fillings & Valves
 www.havi.in
 info@havi.in

PATH: X:\2022-2023\EXPORT\EN222300614\GAD