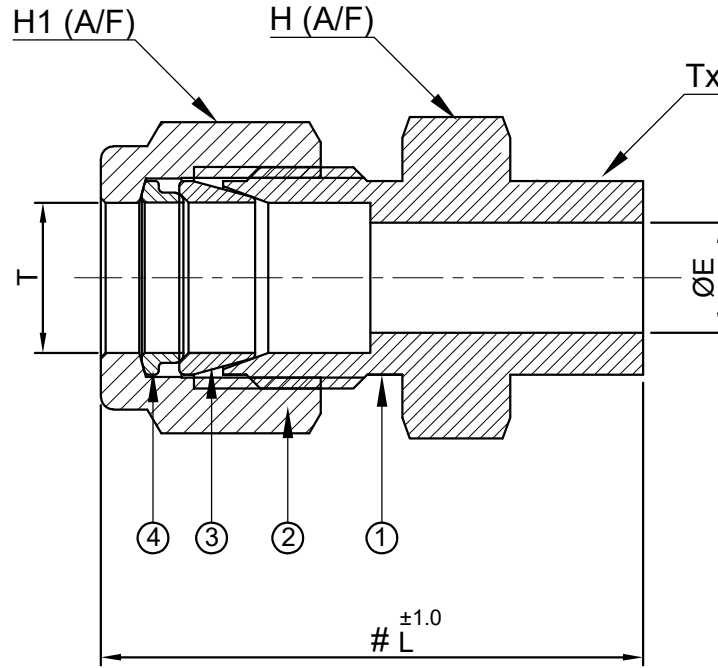



SR NO	DESCRIPTION	QTY	MATERIAL
1	BODY	1	SS316
2	NUT	1	SS316
3	FRONT FERRULE	1	SS316
4	BACK FERRULE	1	SS316



SR NO	PART NO	T	Tx	L	H1 (A/F)	H (A/F)	ØE
1	6MBWC4T-S6	6mm	1/4" ODT(6.35mm)	33.0	14.0	14.2	4.7
2	12MBWC8T-S6	12mm	1/2" ODT(12.7mm)	47.0	22.0	20.5	7.1

PART NAME : Weld Connector - Tube OD X Tube OD		CUSTOMER NAME:	
DWG NO - XMBWCXT-S6		PROJECT NAME & NO:	
MATERIAL : SS 316		ENQ NO:- EN2223/00089	
REV NO		DESCRIPTION	
SIGN		DATE	
DRAWN BY		VK 10.06.2022	
CHECKED BY		RW 10.06.2022	
APPROVED BY		SM 10.06.2022	
SO NO: -		SHEET NO: 01 OF 01	
* All dimensions are in mm. Dimensions for reference only and are subject to change without notice		REV NO: 00	
* This document is the property of Havi Engineering India Pvt. Ltd. No exploitation or release of any text contained herein or relating to this document is permitted in any form without the written consent of HAVI.		SCALE: NTS	

SIGN		DATE
DRAWN BY	VK	10.06.2022
CHECKED BY	RW	10.06.2022
APPROVED BY	SM	10.06.2022


havi
 Fittings & Valves

www.havi.in
 info@havi.in

- NOTE:
- # MARKED DIMENSION IS IN FINGER TIGHT POSITION.
 - NPT THREAD AS PER ANSI B 1.20.1.