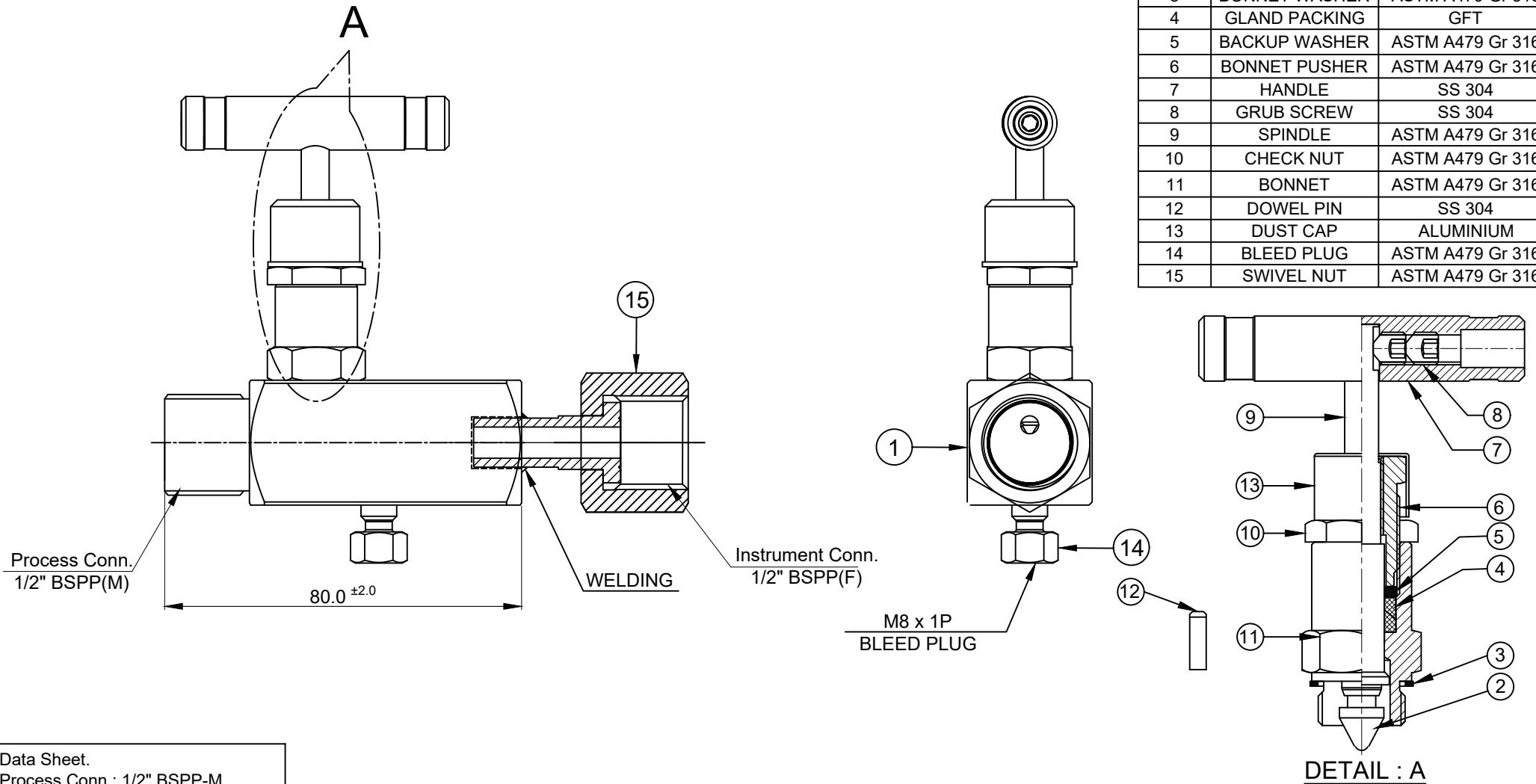


SR NO	DESCRIPTION	MATERIAL	QTY
1	BODY	ASTM A479 Gr 316	1
2	TIP	ASTM A479 Gr 316	1
3	BONNET WASHER	ASTM A479 Gr 316	1
4	GLAND PACKING	GFT	1 SET
5	BACKUP WASHER	ASTM A479 Gr 316	1
6	BONNET PUSHER	ASTM A479 Gr 316	1
7	HANDLE	SS 304	1
8	GRUB SCREW	SS 304	2
9	SPINDLE	ASTM A479 Gr 316	1
10	CHECK NUT	ASTM A479 Gr 316	1
11	BONNET	ASTM A479 Gr 316	1
12	DOWEL PIN	SS 304	1
13	DUST CAP	ALUMINIUM	1
14	BLEED PLUG	ASTM A479 Gr 316	1
15	SWIVEL NUT	ASTM A479 Gr 316	1



Data Sheet.  
 Process Conn.: 1/2" BSPP-M  
 Instrument Conn.: 1/2" BSPP-F

Orifice: 4mm

Screwed Bonnet Design

MWP.: 6000 psig @ 100 °F  
 Seat Test Press (Hydro): 6600 psig  
 Seat Test Press (Pneu): 90 psig  
 Body Test Press (Hydro): 9000 psig  
 Nace MR0175 Applicable

**havi**  
 Fittings & Valves  
 info@havi.in www.havi.in  
 A-201, PRIME TRADE CENTER  
 SATIVALI ROAD, VASAI (E),  
 PALGHAR - 401208, MAHARASHTRA, INDIA

	SIGN	DATE
DRAWN BY	MBC	09.06.2023
CHECKED BY	VM	09.06.2023
APPROVED BY	SRD	09.06.2023

PART NAME : GAUGE VALVE  
 1/2" BSPP-M x 1/2" BSPP-F With swivel nut, M8 Bleed plug

DWG NO : - GVBC-8IPM-8IPFSN-4F-S6  
 MATERIAL : - AS PER BOM

CUSTOMER NAME:-  
 PROJECT NAME :-  
 END USER NAME :-

ENQ NO: EN2324/00241

SHEET NO: 01 OF 01  
 REV NO: 00  
 SCALE: NTS

\* All dimensions are in mm. Dimensions for reference only and are subject to change without notice  
 \* This document is the property of Havi Engineering India Pvt. Ltd. No exploitation or release of any text contained herein or relating to this document is permitted in any form without the written consent of HAVI.

PATH: J:\2023-2024\EXPORT\EN232400241