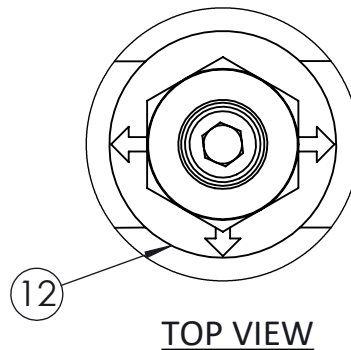


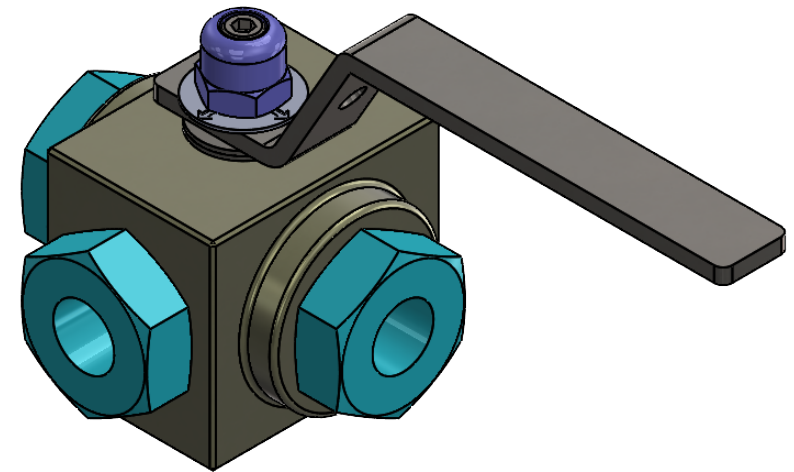
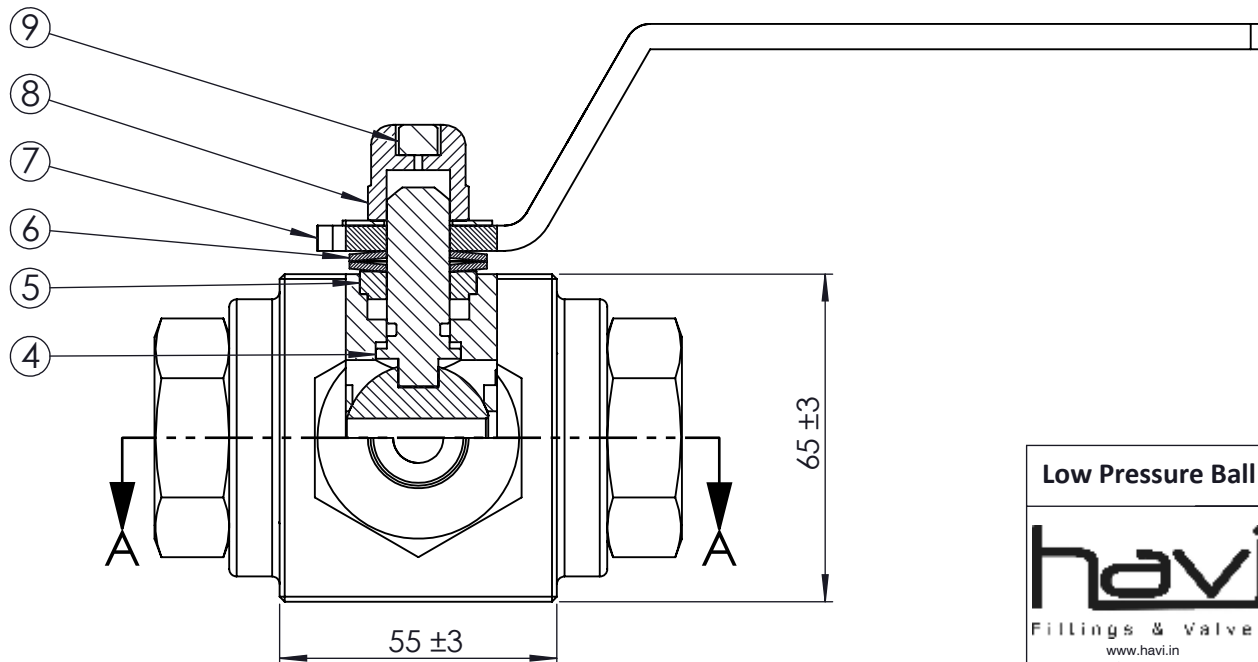
DATA SHEET

Type : 3 Way 'T' Port
 Connection : 1/2" NPT(F)
 Orifice: 10.0mm
 Working Press : 1500 psi
 Seat Test (Hydro) : 1650 psi
 Body Test (Hydro) : 2250 psi
 Pneumatic Seat Test : 90 psi
 M.W.T. : -54 °C To 260 °C



ITEM NO.	DESCRIPTION	MATERIAL	QTY.
1	BODY	ASTM A479 Gr.316	1
2	BALL	ASTM A479 Gr.316	1
3	BALL SEAT	PTFE/RPTFE	4
4	SPINDLE	ASTM A479 Gr.316	1
5	GLAND	ASTM A479 Gr.316	1
6	BELLVILLE WASHER	ASTM A479 Gr.316	2
7	HANDLE WITH SLEEVE	SS304 + PVC	1
8	SPINDLE NUT	ASTM A479 Gr.316	1
9	HEX SCREW	SS304	1
10	SEAL RING	PTFE/RPTFE	3
11	END CONNECTOR	ASTM A479 Gr.316	3
12	DIRECTION PLATE	SS304	1

SECTION A-A



Low Pressure Ball Valve 3 Way 1/2" NPT(F) T Port

All dimensions are in mm, unless otherwise stated.

Material: As per BOM



Rev. No/Date	0	27.03.2024
Drawn/Date	RRS	27.03.2024
Approved/Date	SRD	27.03.2024
SCALE	NTS	

Drawing No

LBV-10B-8F3WT-S6

Fillings & Valves
 www.havi.in
 info@havi.in

* All dimensions are in mm. Dimensions for reference only and are subject to change without notice
 * This document is the property of Havi Engineering India Pvt. Ltd. No exploitation or release of any text contained herein or relating to this document is permitted in any form without the written consent of HAVI.