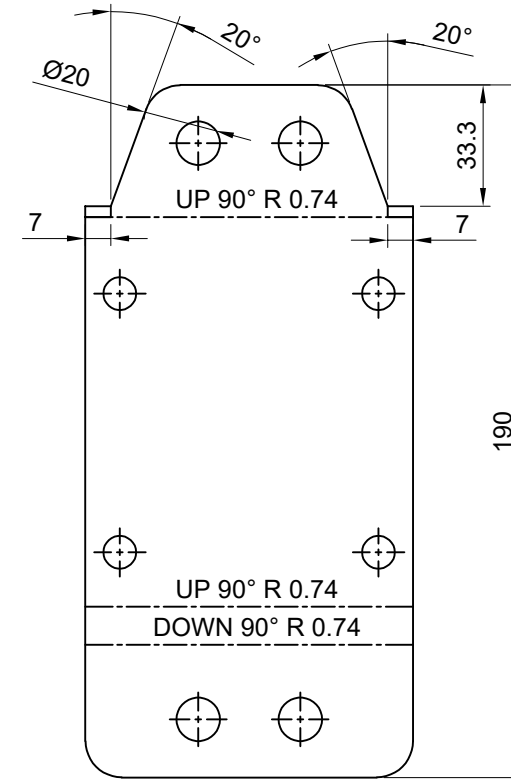
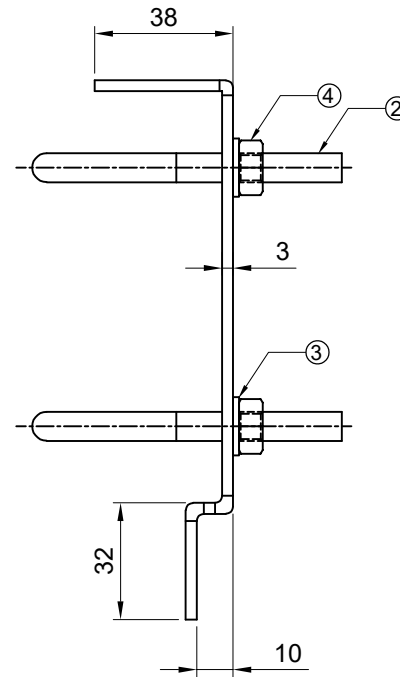
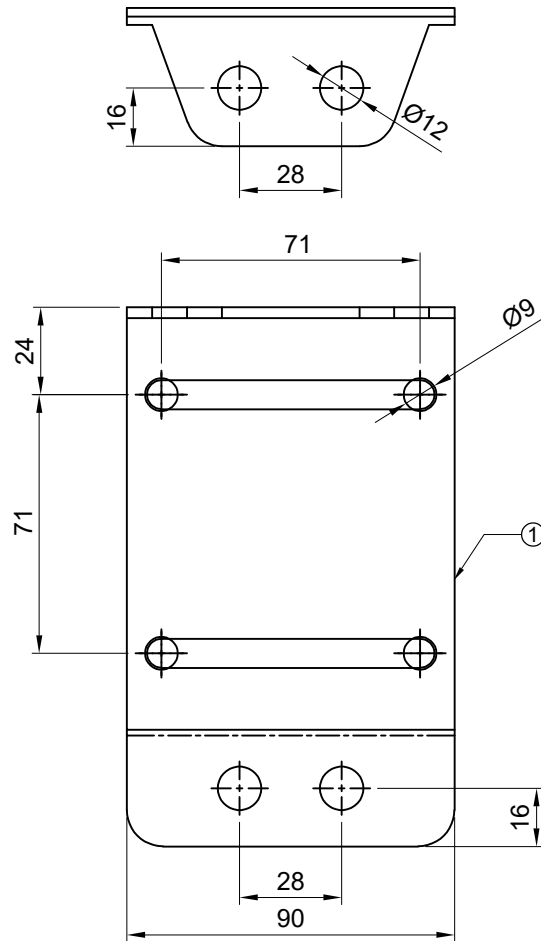


SR No	Part Description	MOC	Qty
1	Bracket	SS316	1
2	U-Bolt	SS316	2
3	Washer	SS304	4
4	Nut	SS304	4



**MANUFACTURING AND HANDLING INSTRUCTIONS :-**

- 1) HANDLE WITH CARE.
- 2) NO DENTS OR TOOL MARKS AFTER MACHINING. NO WIRE BURRS ALLOWED.
- 3) NO CHATTERING ON MACHINED SURFACE. NO VISIBLE MACHINING LINE PERMITTED. DO NOT USE POLISH PAPER OR BUFFING ON MACHINED AREA.
- 4) UNSPECIFIED TOLERANCE IS  $\pm 0.2$

**NOTE :-** " \* " INDICATES DIMENSION IS TO BE CHECKED WHILE INCOMING INSPECTION

**Mounting U-Bolts and Nuts to be provided alongwith Bracket**

MOUNTING BRACKET		All Dimensions are in mm. Unless otherwise stated.	
		Rev. No/Date	00
		Drawn/Date	BJ / 10/08/18
		Approved/Date	SD/ 10/08/18
		SCALE	NTS
		Material : AS PER BOM	
		DRAWING NO.:-	
		<b>MB0101-S6</b>	
<p>* All dimensions are in mm. Dimensions for reference only and are subject to change without notice.            * This document is the property of VIPAL ENTERPRISES Pvt. Ltd. No exploitation or release of any text contained herein or relating to this document is permitted in any form without the written consent of VIPAL.</p>			