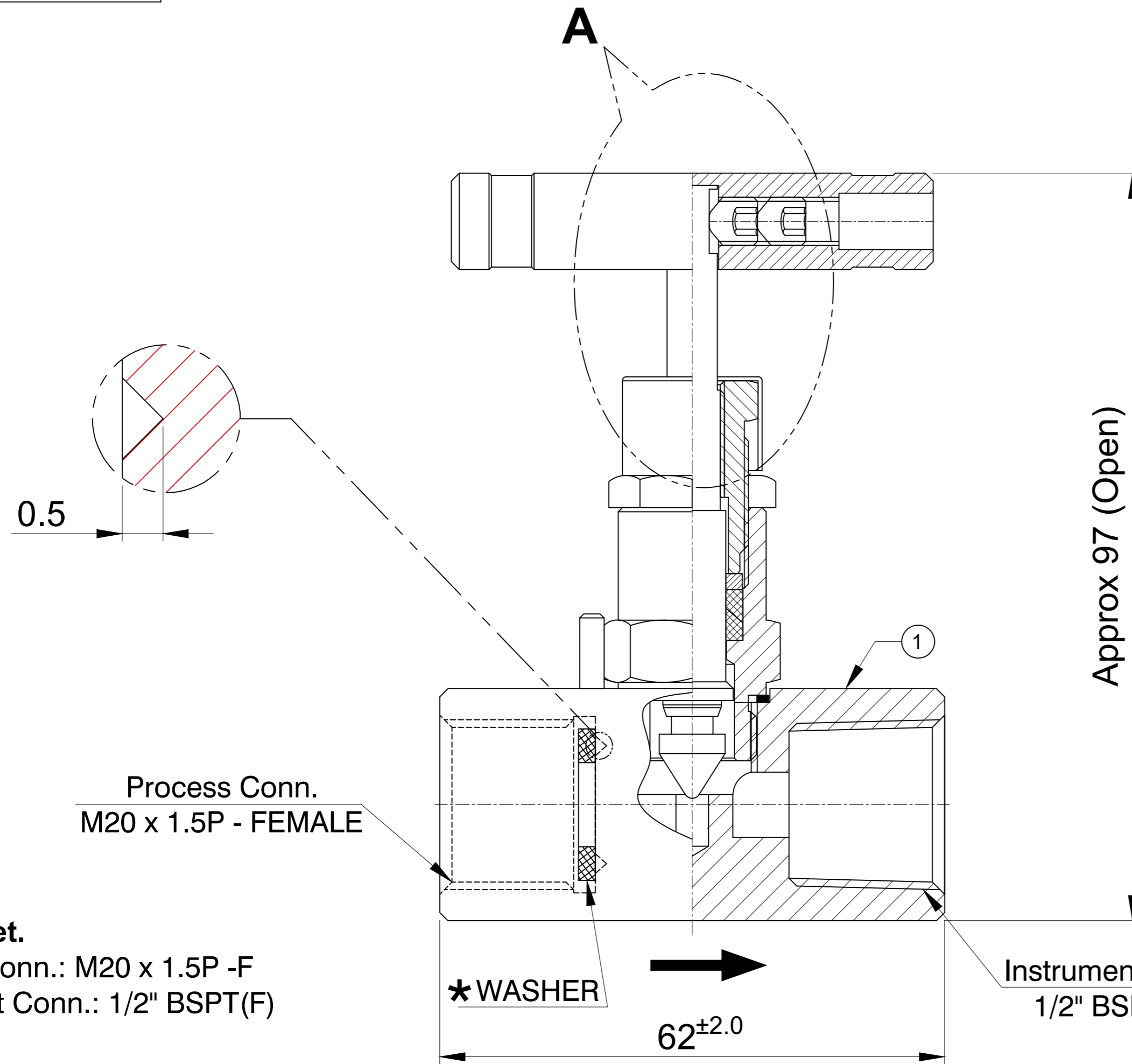
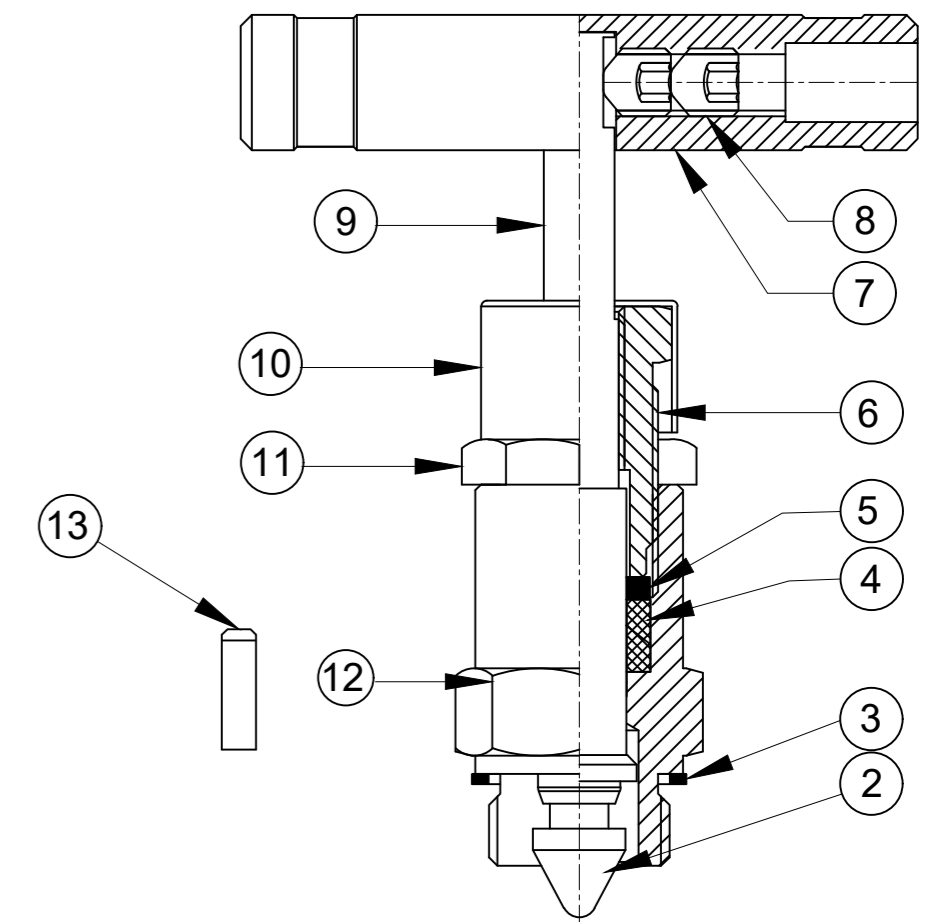


SR NO	QTY (Nos)
1	100



SR NO	DESCRIPTION	MATERIAL	QTY
1	BODY	ASTM A182 Gr.SS316	1
2	TIP	ASTM A479 Gr.SS316	1
3	BONNET PACKING	ASTM A479 Gr.SS316	1
4	GLAND PACKING	GRAPHITE	1
5	GLAND WASHER	ASTM A479 Gr.SS316	1
6	BONNET PUSHER	ASTM A479 Gr.SS316	1
7	HANDLE	ASTM A479 Gr.SS316	1
8	GRUB SCREW	ASTM A479 Gr.SS316	2
9	SPINDLE	ASTM A479 Gr.SS316	1
10	DUST CAP	ALUMINUM	1
11	CHECK NUT	ASTM A479 Gr.SS316	1
12	BONNET	ASTM A479 Gr.SS316	1
13	DOWEL PIN	ASTM A479 Gr.SS316	1



DETAIL : A

Data Sheet.

Process Conn.: M20 x 1.5P -F
Instrument Conn.: 1/2" BSPT(F)

Orifice: 4mm

Screwed Bonnet Design

MWT.: -49° C TO +100° C

MWP.: 6000 psig @ 100 °F

Seat Test Press (Hydro): 6600 psig

Seat Test Press (Pneu): 90 psig

Body Test Press (Hydro): 9000 psig

NOTE:

1 ALL DIMENSIONS ARE IN MM UNLESS OTHERWISE SPECIFIED

2 NPT THREAD AS PER ASME B1.20.1

* WASHER IS IN CUSTOMER SCOPE

PART NAME :- NEEDLE VALVE -
M20 x 1.5P-(F) X1/2 "-BSPT(F)

CUSTOMER NAME:-

DWG NO : NVBS-M20F-8ITF-S6-G

PROJECT NAME:-

MATERIAL : AS PER BOM

PO NO:-

	SIGN	DATE
DRAWN BY	MBC	14.07.2023
CHECKED BY	VM	14.07.2023
APPROVED BY	SRD	14.07.2023

ENQ NO: EN2324/00427

SHEET NO:
01 OF 01

REV NO	DESCRIPTION	SIGN	DATE

SO NO: -



www.havi.in
info@havi.in

* All dimensions are in mm. Dimensions for reference only and are subject to change without notice
* This document is the property of Havi Engineering India Pvt. Ltd. No exploitation or release of any text contained herein or relating to this document is permitted in any form without the written consent of HAVI.

REV NO: 00

SCALE: NTS

PATH: X:\2023-2024\EXPORT\EN2324\00427\GAD