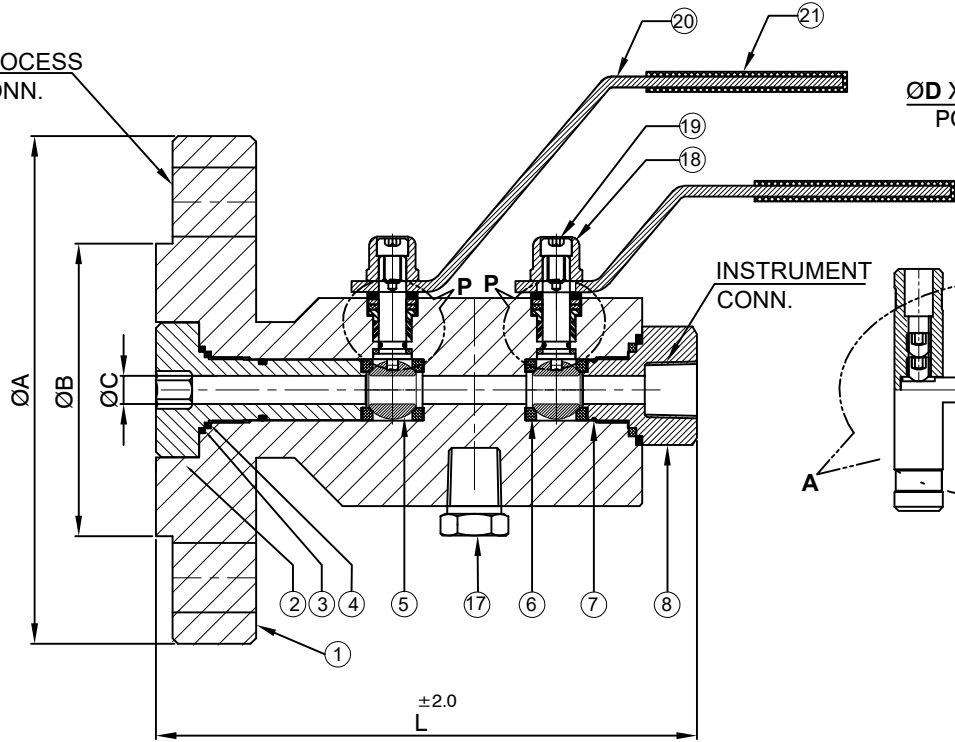
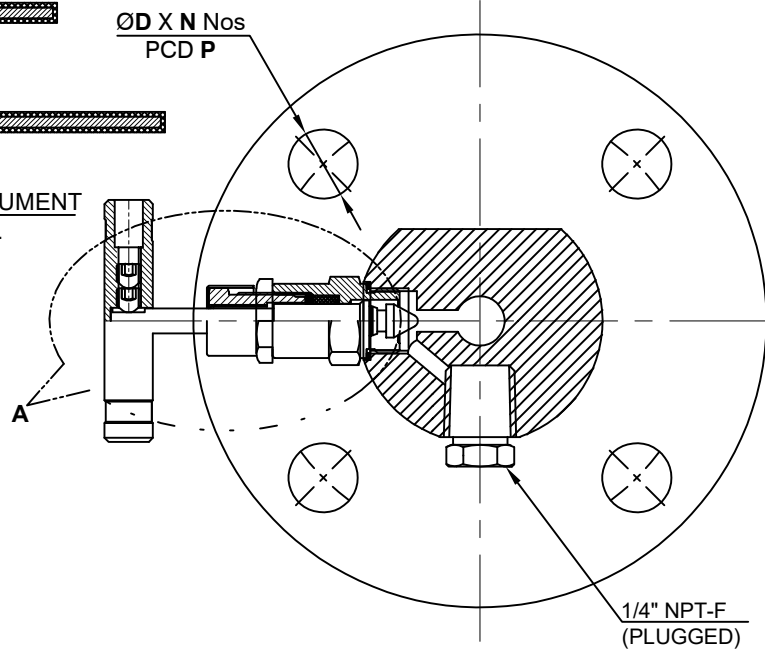


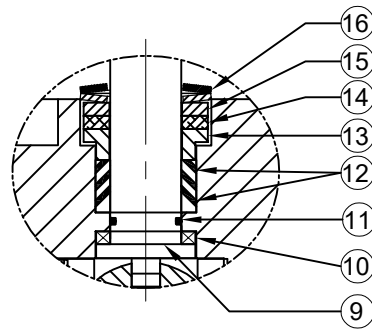
PROCESS  
CONN.



ØD X N Nos  
PCD P



1/4" NPT-F  
(PLUGGED)



**DETAIL-"P"**

SR No	Part Description	Material	Qty
1	Body	ASTM A182 Gr.F316	1
2	Bush	ASTM A182 Gr.F316	1
3	Primary Seal	PTFE	2
4	Secondary Seal	GRAPHITE	2
5	Ball	ASTM A479 Gr.SS316	2
6	Ball Seat	CFT	4
7	End Connector O-Ring	Viton AED	2
8	End Connector	ASTM A182 Gr.F316	1
9	Stem	ASTM A479 Gr.SS316	2
10	Thrust Seal	Carbon Filled PTFE	2
11	Stem O-Ring	Viton AED	2
12	Chevron Packing	Glass Filled PTFE	2 SET
13	Gland Washer	ASTM A479 Gr.SS316	2 SET
14	Gland Packing	GRAPHITE	2 SET
15	Backup Washer	ASTM A479 Gr.SS316	2 SET
16	Belleville Washer	SS316	2 SET
17	Drain Plug	ASTM A479 Gr.SS316	1
18	Check Nut	SS304	2
19	Bolt	SS304	2
20	Handle	SS304	2
21	Handle Sleeve	PVC	2

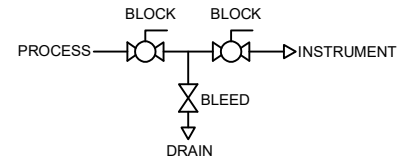
**Data Sheet.**

Process Conn.: DN 25 PN100 RF Flange  
 Instrument Conn.: 1/2" NPT-F  
 Drain Conn.: 1/4" NPT-F  
 Bore.: 14 mm

Drain Bonnet Type: Screwed Type

Pressure Rating  
 Valve Design:- ASME B16.34 / API 6D / EN 1092 Type B  
 Testing: API 598 & MESC 77/312  
 Fire Safe Test: API 6FA/ API 607/ BS EN ISO 10497  
 Flange Type: Raised Face Type  
 Nace MR0175 Applicable

The valve will be an anti-static design  
 The valve will feature self relieving seats  
 The valve will feature anti blowout stem design



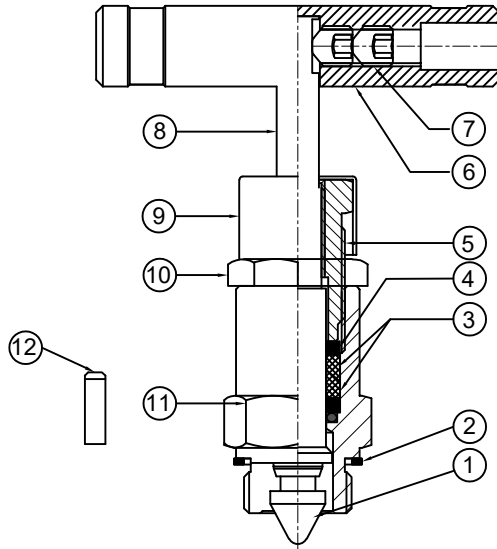
**SHEET 1 OF 2**

PART NAME : IVA SERIES DBB,BNB TYPE FLANGE END (RF) X NPT-F		CUSTOMER NAME: -	
DWG NO : SDBB-FNN-14B-16RFPN100-4ND-8N-BNB-S6-N		PROJECT NAME & NO: -	
MATERIAL : As per BOM		ENQ NO: EN2223/00853	
REV NO	DESCRIPTION	SIGN	DATE
* All dimensions are in mm. Dimensions for reference only and are subject to change without notice * This document is the property of Havi Engineering India Pvt. Ltd. No exploitation or release of any text contained herein or relating to this document is permitted in any form without the written consent of HAVI.		REV NO: 00 SCALE: NTS	

	SIGN	DATE
DRAWN BY	VK	27.10.2022
CHECKED BY	SB	27.10.2022
APPROVED BY	SM	27.10.2022



PATH:-X12022-2023\EXPORT\EN222300853

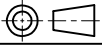



**DETAIL-"A"**

Sr No	PART	QTY	MATERIAL
1	Tip	1	ASTM A479 Gr.SS316
2	Bonnet Packing	1	ASTM A479 Gr.SS316
3	Gland Washer	1	ASTM A479 Gr.SS316
4	Gland Packing	1 Set	GFT
5	Bonnet Pusher	1	ASTM A479 Gr.SS316
6	Handle	1	SS316
7	Grub Screw	2	SS 316
8	Spindle	1	ASTM A479 Gr.SS316
9	Drain Cap	1	PVC
10	Check Nut	1	SS316
11	Bonnet	1	ASTM A479 Gr.SS316
12	Dowel Pin	1	SS 316

Sr No	Model No.	Inlet Connection(RF)	Outlet Connection	Bleed Pressure Ratio	L	ØA	ØB	ØC	ØD	N	P	
1	SDBB-FNN-14B-16RFPN100-4ND-8N-BNB-S6-N	DN 25	1/2" NPT-F	1/4" NPT-F	PN100	187	140	68	14	18	4	100

SHEET 2 OF 2

PART NAME : IVA SERIES DBB,BNB TYPE FLANGE END (RF) X NPT-F				CUSTOMER NAME: -			
DWG NO : SDBB-FNN-14B-16RFPN100-4ND-8N-BNB-S6-N				PROJECT NAME & NO: -			
MATERIAL : As per BOM				ENQ NO: EN2223/00853			
REV NO	DESCRIPTION	SIGN	DATE				
<p>* All dimensions are in mm. Dimensions for reference only and are subject to change without notice</p> <p>* This document is the property of Havi Engineering India Pvt. Ltd. No exploitation or release of any text contained herein or relating to this document is permitted in any form without the written consent of HAVI.</p>							
 <a href="http://www.havi.in">www.havi.in</a> <a href="mailto:info@havi.in">info@havi.in</a>				REV NO: 00 SCALE: NTS			

PATH - X:\2022-2023\EXPORT\EN2223\00853