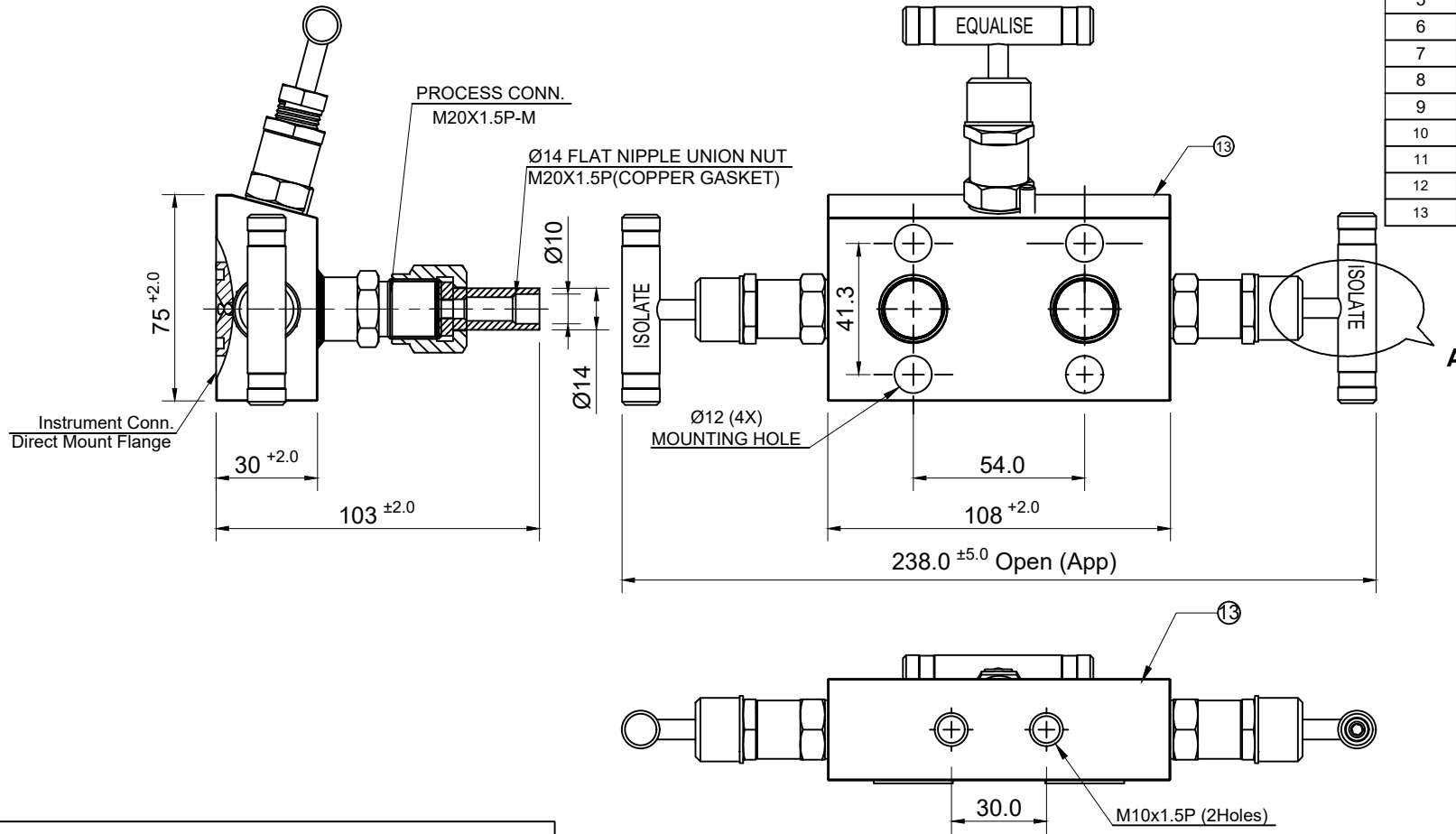
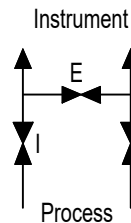


Sr No.	Description	Material	Qty
1	Tip	ASTM A479 Gr. SS316	3
2	Bonnet Packing	ASTM A479 Gr. SS316	3
3	Gland Packing	GFT	3 Set
4	Gland Washer	ASTM A479 Gr. SS316	3
5	Bonnet Pusher	ASTM A479 Gr. SS316	3
6	Handle	SS 304	3
7	Grub Screw	SS 304	6
8	Spindle	ASTM A479 Gr. SS316	3
9	Drain Cap	ALLUMINIUM	3
10	Check Nut	SS304	3
11	Bonnet	ASTM A479 Gr. SS316	3
12	Dowel Pin	SS304	3
13	Body	ASTM A182 Gr. F316	1



TECHNICAL DETAILS:

- Process Side: M20X1.5P-M (Ø14 FLAT NIPPLE)
- Instrument Side: FLANGE (IEC 61518-TYPE B)
- Screwed Bonnet Design
- MWP : 6000 psig @100°F
- Seat Test Press (Hydro): 6600 psig
- Seat Test Press (Pneu): 90 psig
- Body Test Press (Hydro) : 9000 psig



<p>havi Fittings & Valves info@havi.in www.havi.in A-201, PRIME TRADE CENTER SATIVALI ROAD, VASAI (E), PALGHAR - 401208, MAHARASHTRA, INDIA</p>				PART NAME : 3 WAY MANIFOLD VALVE		CUSTOMER NAME:	
				M20X1.5P-M (Ø14 FLAT NIPPLE)(COPPER GASKET) x FLANGE		-	
DRAWN BY PG		DATE 10.04.2023		DWG NO : - TV3C-M20M-14MTBW-S6		PROJECT NAME & NO:	
CHECKED BY MC		DATE 11.04.2023		MATERIAL : - SS316		-	
APPROVED BY VM		DATE 11.04.2023		REV NO		ENQ NO:EN2223/01504	
				DESCRIPTION		SO NO: -	
				SIGN		SHEET NO: 01 OF 01	
				DATE		REV NO: 00	
* All dimensions are in mm. Dimensions for reference only and are subject to change without notice						SCALE: NTS	
* This document is the property of Havi Engineering India Pvt. Ltd. No exploitation or release of any text contained herein or relating to this document is permitted in any form without the written consent of HAVI.							

PATH: \\192.168.0.10\ENQUIRIES\2022-2023\EXPORT\EN222301504