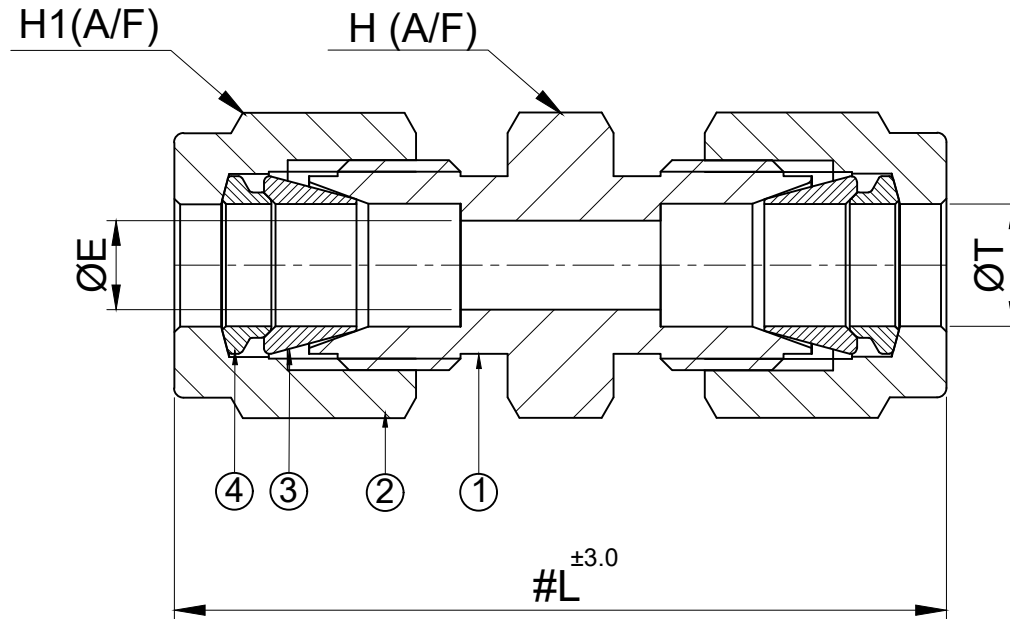


SR NO	DESCRIPTION	QTY	MATERIAL
1	BODY	1	SS 316
2	NUT	2	SS 316
3	FRONT FERRULE	2	SS 316
4	BACK FERRULE	2	SS 316



PART NO	ØT	L	H (A/F)	H1(A/F)	ØE
4U-S6	1/4"	41	14(9/16")	14(9/16")	4.7
8U-S6	1/2"	52	22(7/8")	22(7/8")	10.3
12U-S6	3/4"	55	27(1-1/16")	27(1-1/16")	15.7
16U-S6	1"	66.5	35(1-3/8")	35(1-3/8")	22.4

NOTE:

# NPT THREAD AS PER ANSI B 1.20.1.

# UNLESS & OTHERWISE SPECIFIED ALL DIMENSIONS ARE IN 'mm'

**havi**  
Fittings & Valves  
info@havi.in www.havi.in  
A-201, PRIME TRADE CENTER  
SATIVALI ROAD, VASAI (E),  
PALGHAR - 401208, MAHARASHTRA, INDIA

	SIGN	DATE
DRAWN BY	MBC	04.07.2023
CHECKED BY	VM	04.07.2023
APPROVED BY	SRD	04.07.2023

PART NAME : TUBE OD x TUBE OD

CUSTOMER NAME:

DWG NO : - GA-U-S6

MATERIAL : - AS PER BOM

PROJECT NAME:

ENQ NO: EN2324/00354



SO NO:

SHEET NO:  
01 OF 01

\* All dimensions are in mm. Dimensions for reference only and are subject to change without notice

\* This document is the property of Havi Engineering India Pvt. Ltd. No exploitation or release of any text contained herein or relating to this document is permitted in any form without the written consent of HAVI.

REV NO: 00

SCALE: NTS