

Monoflanges



T-Bar Bonnet

Gas Solution bonnet with non-rotating Metal Stem Tip

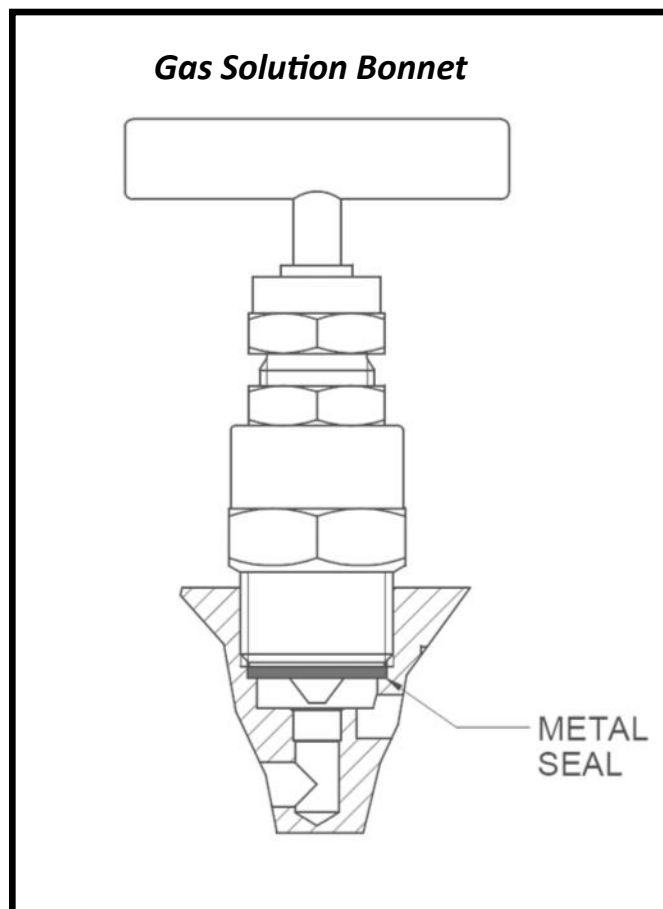
The **Gas Solution bonnet** protects the internal and external threads. Moreover, the bonnet thread is less subject to wear, since it is not in direct contact with the fluid.

A **non rotating stem tip** is typically used in high cycle applications to extend the service life of the valve. Its purpose is to prevent the galling of the valve seat in contact with the non-rotating stem, which is driven straight into it without rotating.

Main features include:

- Tee bar easy manoeuvrability with minimum effort
- PTFE packing standard, optional Graphite
- Stainless steel construction as standard, optional: carbon steel LF2, Duplex, Super Duplex, Monel 400, Hastelloy C276, etc.
- Colour coded functional identification
- Externally adjustable gland
- Variety of end connections
- Dust cap to prevent contaminations on the operating thread.

STANDARD



OPTIONS

O.S.&Y. Bonnet (firesafe)



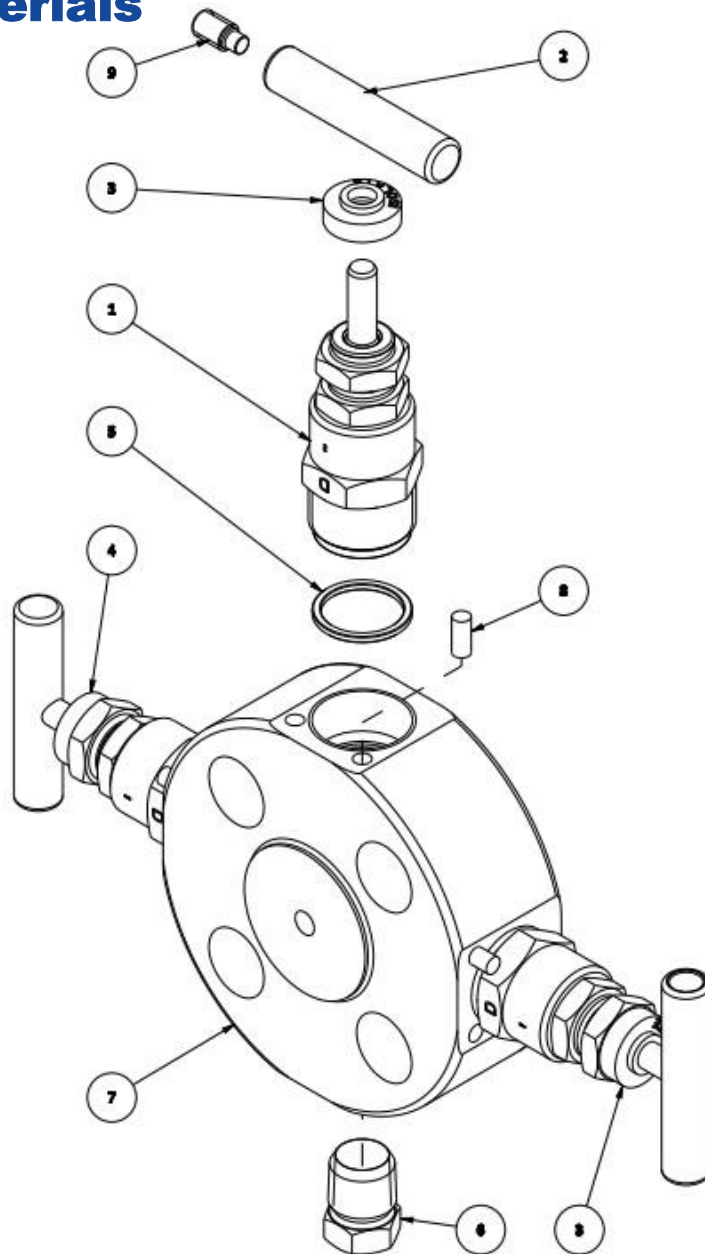
Anti-Tamper Bonnet



T-Bar Bonnet



Bill of Materials

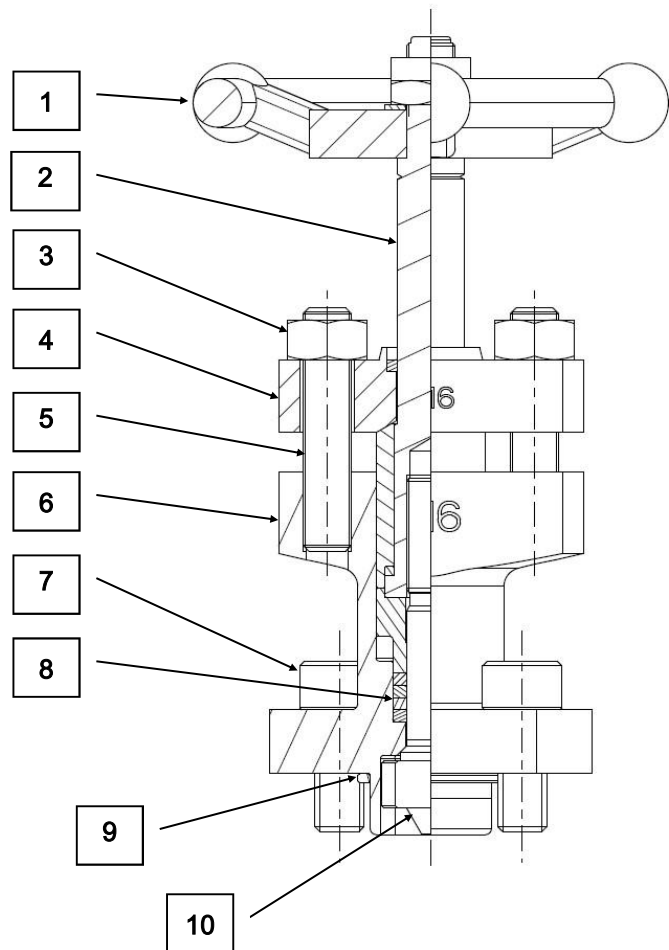


No.	Description	Material	Q.ty
1	Bonnet assembly	PTFE/316L	3
2	Standard T-Bar handle	ASTM A276 303	3
3	Isolate dust cap	Hytrel Blue	2
4	Vent dust cap	Hytrel Red	1
5	Gas Solution Seal ring	AISI 316L	3
6	Male plug 1/4" NPT	A479 316/316L	1
7	Monoflange body	AISI 316L	1
8	Locking pin UNI 1474-S4 4x10	A2	3
9	Screw UNI 5925 M6x12	A4	3

O.S.&Y. bonnet

Features

- Rolled stem threads prevent galling. Stem threads are completely isolated from the process.
- Stem packing with graphite rings for bubble-tight seal.
- Bolted bonnet strength and reliability.
- Stem tip construction: non-rotating self-centering.
- Flange gasket seal ensures a bubble-tight between body and bonnet.
- Backseat design provides secondary stem sealing and prevents stem blowout.
- Adjustable gland flange allows easy access to the packing gland, and packing adjustment for an effective stem seal.
- Robust handwheel painted
- Firesafe to BS 6755 PART. 2
- Pressure rating up to 6.000 psi (413 bar)
- Temperature rating: (GRAPHITE)
-46°C / +510°C (-65°F / +950°F)
- Design according to ASME B16.34



BILL OF MATERIALS		
1	HANDWHEEL	PAINTED CARBON STEEL
2	UPPER STEM	AISI 316L
3	NUT M8	AISI 316L
4	GLAND	AISI 316L
5	BOLT	AISI 316L
6	BONNET BODY	AISI 316L
7	SCREW M8X20	AISI 316L
8	PACKING	GRAPHITE
9	METAL RING	AISI 316L
10	LOWER STEM	17-4 PH

Coding system

Ordering Information - Monoflanges

Sami Instruments manufactures monoflanges to replace multivalve assemblies with single, flange-mounted manifold configurations. The main advantages over a typical system include compact design and weight saving, which can reduce stress from loading and vibrations, with fewer potential leak points and reduced installation and maintenance costs.

Model	Type	Configuration	Nominal Size	Rating	Flange Finish	Outlet	Packing Isolate Vent	Material	Options
MO	H	1	A	1	A	2	P	A	A

Model	
MO	Monoflange Primary Isolate O.S.&Y. Graphite Drain 1/4" NPT
MB	Monoflange Primary Isolate T.Bar Graphite Drain 1/4" NPT
MC	Monoflange Primary Isolate T.Bar PTFE Drain 1/4" NPT
ML	Monoflange Primary Isolate O.S.&Y. Graphite Drain 10 mm bore

Type		Configuration		Nominal Size		Rating	
H	Flanged/Threaded	1	Block - Bleed - Block	A	1/2"	1	150 lbs
L	Flanged/Flanged	3	Block - Block - Bleed	B	3/4"	2	300 lbs
		5	Block - Bleed	C	1"	3	600 lbs
		7	Block - Block	D	1 1/2"	4	900 lbs
		9	Block	E	2"	5	1500 lbs
				F	3"	6	2500 lbs

Flange Finish		Outlet		Packing		Material		Options	
A	RF Stock Finish	1	1/4" NPT	G	GRAPHITE	A	Aisi 316L	A	Drain / Vent 1/2"
B	RF Smooth Finish	2	1/2" NPT	P	PTFE	C	Aisi 316 Ti	C	Locking
E	RTJ Ring Joint	3	3/4" NPT			D	Monel 400	D	Drain/Vent A-T
F	FF Stock Finish	4	1" NPT			E	Duplex F51	E	2nd Isolate Anti-Tamper
G	FF Smooth Finish	5	Flanged = IN			G	Super Duplex F55	F	Isolate Anti-Tamper
		6	IEC 61518/A			H	HASTELLOY C276	H	Out: no. 2
						I	INCONEL 625	I	O.S.&Y./Needle/Needle Operator: T-Bar
						J	INCOLLOY 825	L	Threaded Holes
						L	TITANIUM	M	O.S.&Y on 2nd Block
						M	A350-LF2	N	All O.S.&Y
								O	O.S.&Y + T-Bar on 2nd Block
								P	All O.S.&Y + T-Bar
								X	Handle bar in 316/316L

Monoflanges with O.S.&Y.

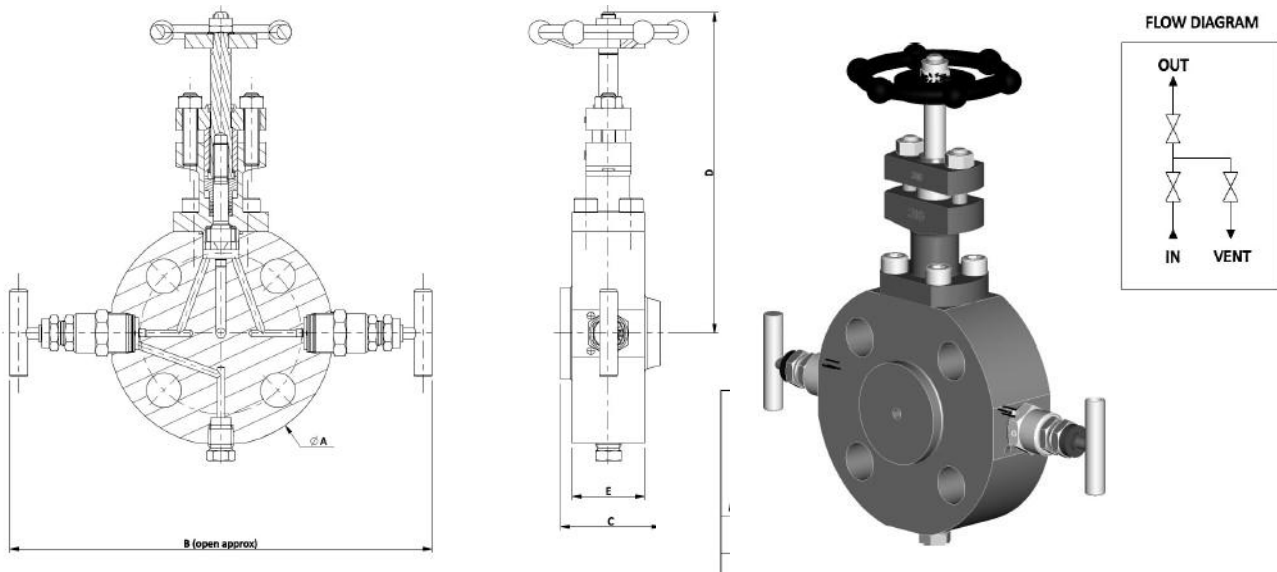
Application

This product range represents a true technical and economical innovation in the management of the instrumentation analysis. Differently from the old system composed by big size block valves, safety and on-off valves, draining and sampling, these monoflanges allow to reduce costs and spaces.

The monoflanges can be manufactured in traditional AISI 316L as standard or in exotic materials when required. They have compact dimensions with consequent reduction of assembly costs.

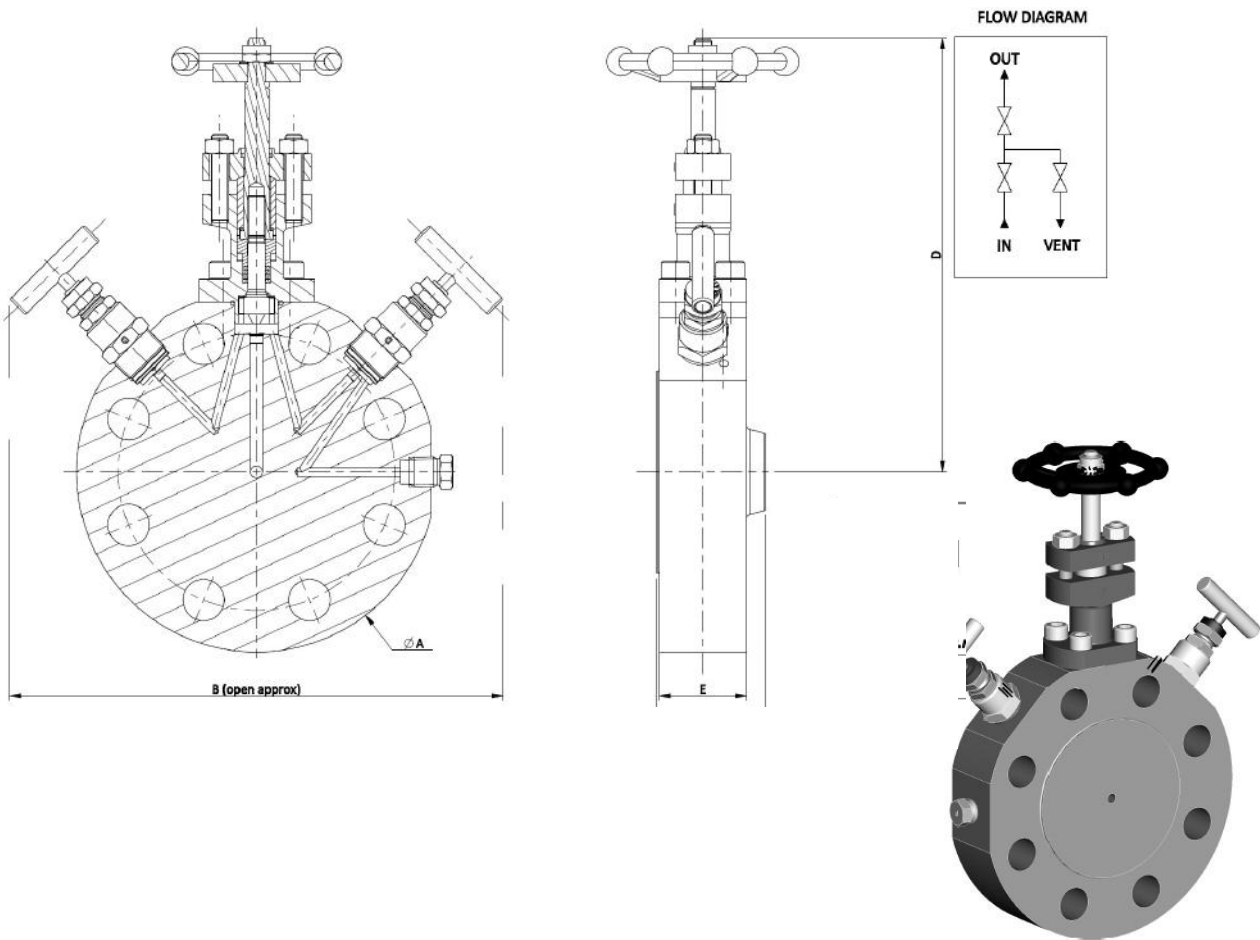


Monoflanges with O.S.&Y.



PART NUMBER	RATING		FEATURES				
			A	B	C	D	E
MOH1A1A2PA	1/2"	150	88.9	197	50.6	157	40
MOH1B1A2PA	3/4"	150	98.4	207	50.6	162.5	40
MOH1C1A2PA	1"	150	107.9	214	50.6	168	40
MOH1D1A2PA	1-1/2"	150	127	236	50.6	178.7	40
MOH1E1A2PA	2"	150	152.4	262	50.6	192.5	40
MOH1F1A2PA	3"	150	190.5	300.6	50.6	212.5	40
MOH1A2A2PA	1/2"	300	94.5	202	50.6	160.5	40
MOH1B2A2PA	3/4"	300	117.5	224	50.6	173	40
MOH1C2A2PA	1"	300	123.8	233	50.6	177	40
MOH1D2A2PA	1-1/2"	300	155.6	265.4	50.6	194	40
MOH1A3A2PA	1/2"	600	94.5	202	55.3	160.5	40
MOH1B3A2PA	3/4"	600	117.5	226.6	55.3	173.4	40
MOH1C3A2PA	1"	600	123.8	233	55.3	177	40
MOH1D3A2PA	1-1/2"	600	155.6	265.4	55.3	194	40
MOH1A4A2PA	1/2"	900	120.6	229	55.3	175.2	40
MOH1B4A2PA	3/4"	900	130.2	237	55.3	180	40
MOH1C4A2PA	1"	900	149.2	259	55.3	190.5	40
MOH1D4A2PA	1-1/2"	900	177.8	287.6	55.3	205.8	40
MOH1A5A2PA	1/2"	1500	120.6	229	55.4	175.2	40
MOH1B5A2PA	3/4"	1500	130.2	239	55.3	180	40
MOH1C5A2PA	1"	1500	149.2	259	55.3	190.5	40
MOH1D5A2PA	1-1/2"	1500	177.8	287.6	55.3	205.8	40
MOH1A6A2PA	1/2"	2500	133.35	243	55.3	182.5	40
MOH1B6A2PA	3/4"	2500	139.7	249.4	55.3	186	40
MOH1C6A2PA	1"	2500	158.75	268.6	55.3	195	40
MOH1D6A2PA	1-1/2"	2500	203.2	313.4	59.7	219	44.4

Monoflanges O.S.&Y.

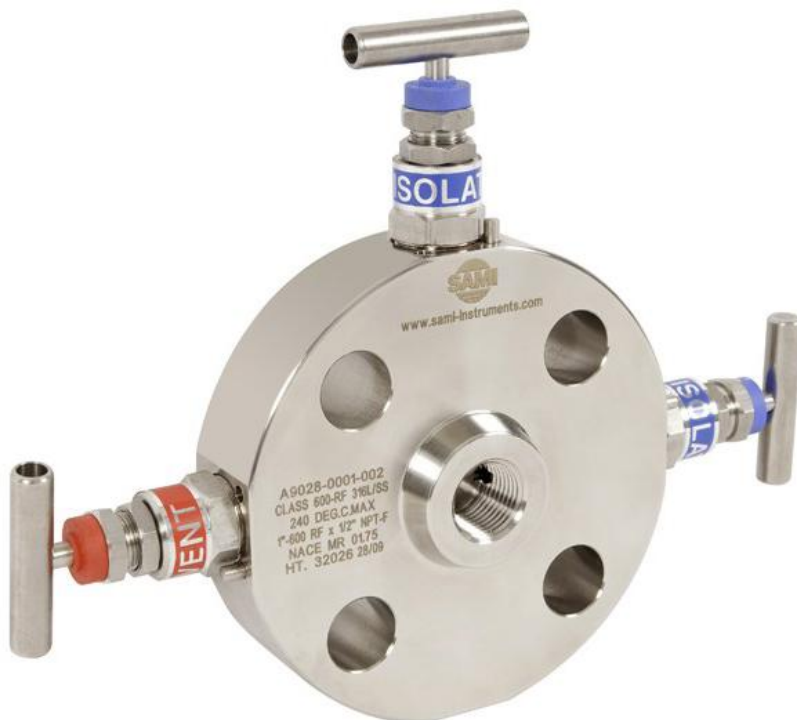


PART NUMBER	RATING		FEATURES				
			A	B	C	D	E
MOH1E2A2PA	2"	300	165.1	228.4	50.6	199	40
MOH1F2A2PA	3"	300	209.55	260.2	50.6	222.4	40
MOH1E3A2PA	2"	600	165.1	228.4	55.3	199	40
MOH1F3A2PA	3"	600	209.55	260.2	55.3	222.4	40
MOH1E4A2PA	2"	900	215.9	264.5	55.3	225.6	40
MOH1F4A2PA	3"	900	241.3	282.7	55.3	238.7	40
MOH1E5A2PA	2"	1500	215.9	264.5	55.3	225.6	40
MOH1F5A2PA	3"	1500	266.7	300.8	62.9	251.7	47.6
MOH1E6A2PA	2"	2500	234.95	277.9	66.1	235.5	50.8
MOH1F6A2PA	3"	2500	304.8	327.8	82	271	66.7

Monoflanges T-Bar

Applications

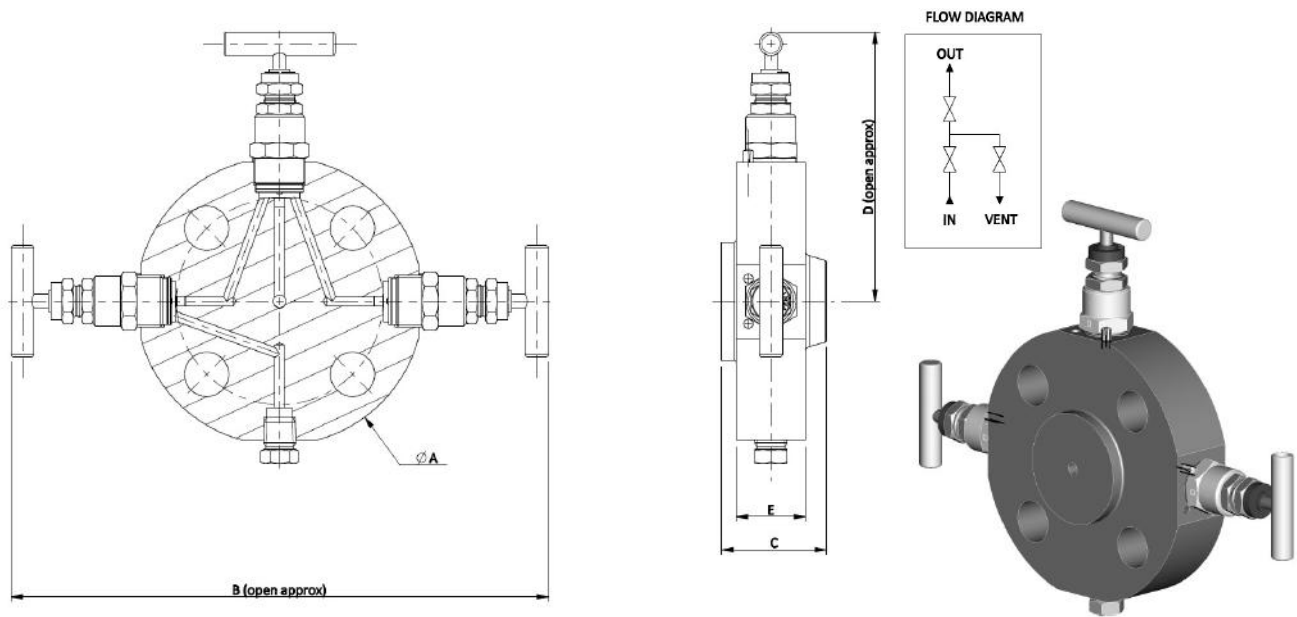
This product range represents a true technical and economical innovation in the management of the instrumentation analysis. Differently from the old system composed by big size block valves, safety and on-off valves, draining and sampling, these monoflanges allow to reduce costs and spaces. The monoflanges can be realized in traditional AISI 316 L as standard or exotic materials when required. They have compact dimensions with consequent reduction of assembling costs.



Main features:

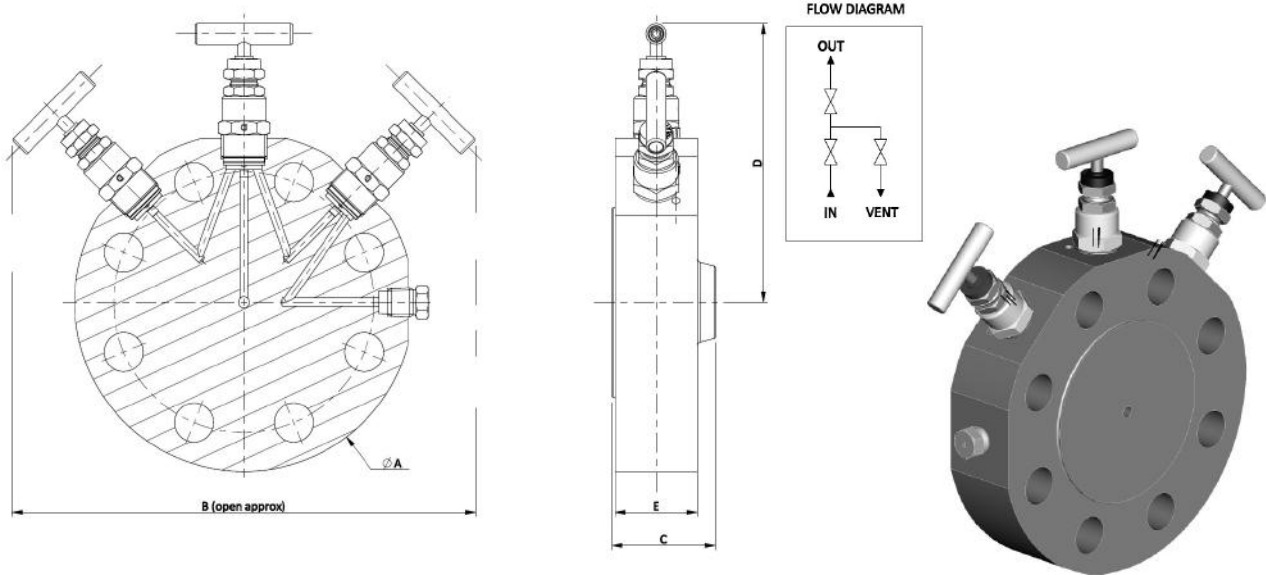
- Stainless steel 316L construction as standard, optional: carbon steel LF2, Duplex, Super Duplex, Monel 400, Hastelloy C276, Inconel 625, etc.
- Temperature rating PTFE packing from -46°C to $+210^{\circ}\text{C}$ (-50°F / $+1000^{\circ}\text{F}$) - GRAPHITE optional.
- T-bar easy manoeuvrability with minimum effort
- PTFE packing standard, optional graphite
- Colour coded functional identification
- Externally adjustable gland
- Dust cap to prevent contaminations on the operating thread

Monoflanges T-Bar



PART NUMBER	RATING		FEATURES				
			A	B	C	D	E
MCH1A1A2PA	1/2"	150	88.9	197	40.6	98.5	30
MCH1B1A2PA	3/4"	150	98.4	207	40.6	103.5	30
MCH1C1A2PA	1"	150	107.9	214	40.6	107	30
MCH1D1A2PA	1-1/2"	150	127	236	40.6	118	30
MCH1E1A2PA	2"	150	152.4	262	40.6	131	30
MCH1F1A2PA	3"	150	190.5	300.6	40.6	150.3	30
MCH1A2A2PA	1/2"	300	94.5	202	40.6	101	30
MCH1B2A2PA	3/4"	300	117.5	224	40.6	112	30
MCH1C2A2PA	1"	300	123.8	233	40.6	116.5	30
MCH1D2A2PA	1-1/2"	300	155.6	265.4	40.6	132.7	30
MCH1A3A2PA	1/2"	600	94.5	202	45.3	101	30
MCH1B3A2PA	3/4"	600	117.5	226.6	45.3	113.3	30
MCH1C3A2PA	1"	600	123.8	233	45.3	116.5	30
MCH1D3A2PA	1-1/2"	600	155.6	265.4	45.3	132.7	30
MCH1A4A2PA	1/2"	900	120.6	229	45.3	114.5	30
MCH1B4A2PA	3/4"	900	130.2	237	45.3	118.5	30
MCH1C4A2PA	1"	900	149.2	259	45.3	129.5	30
MCH1D4A2PA	1-1/2"	900	177.8	287.6	47.3	143.8	32
MCH1A5A2PA	1/2"	1500	120.6	229	45.3	114.5	30
MCH1B5A2PA	3/4"	1500	130.2	239	45.3	119.5	30
MCH1C5A2PA	1"	1500	149.2	259	45.3	129.5	30
MCH1D5A2PA	1-1/2"	1500	177.8	287.6	47.3	143.8	32
MCH1A6A2PA	1/2"	2500	133.35	243	45.3	121.5	30
MCH1B6A2PA	3/4"	2500	139.7	249.4	47.3	124.7	32
MCH1C6A2PA	1"	2500	158.75	268.6	50.3	134.3	35
MCH1D6A2PA	1-1/2"	2500	203.2	313.4	59.7	156.7	44.4

Monoflanges T-Bar



PART NUMBER	FEATURES						
	RATING		A	B	C	D	E
MCH1E2A2PA	2"	300	165.1	228.4	40.6	137.5	30
MCH1F2A2PA	3"	300	209.55	260.2	40.6	160	30
MCH1E3A2PA	2"	600	165.1	228.4	45.3	137.5	30
MCH1F3A2PA	3"	600	209.55	260.2	47.3	160	32
MCH1E4A2PA	2"	900	215.9	264.5	55.3	163	40
MCH1F4A2PA	3"	900	241.3	282.7	55.3	175.9	40
MCH1E5A2PA	2"	1500	215.9	264.5	55.3	163	40
MCH1F5A2PA	3"	1500	266.7	300.8	63.3	188.7	48
MCH1E6A2PA	2"	2500	234.95	277.9	66.3	172.5	51
MCH1F6A2PA	3"	2500	304.8	327.8	82.3	207.8	67

SAMI INSTRUMENTS S.r.l.—A division of the WIKA group

Via Botte, 8 - 35011 Reschigliano di Campodarsego (PD) - Italy

Tel: (+39) 049 9201939

Fax: (+39) 049 9217549

E-mail: info@samivalves.com

Website: www.samivalves.com

